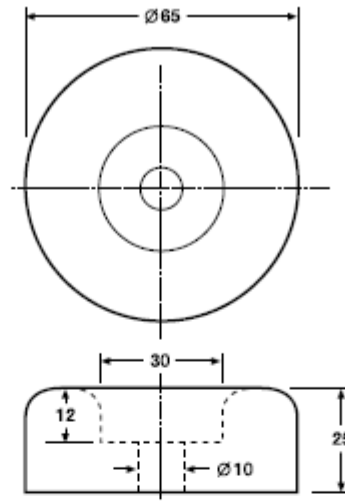
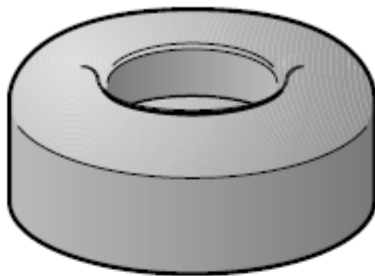
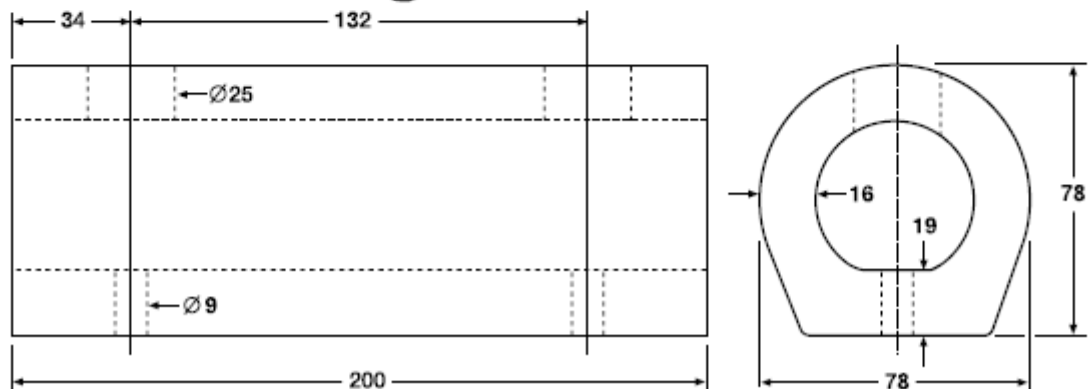
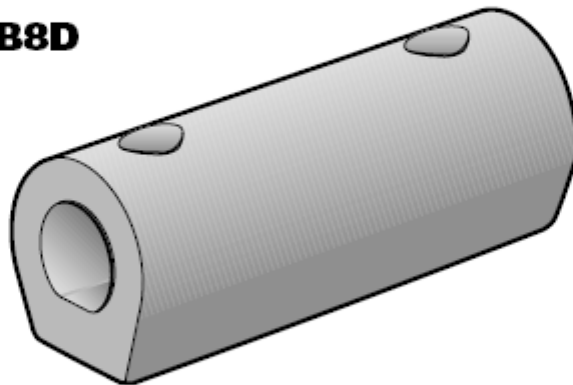




Part Number: **RB3**



Part Number: **RB8D**



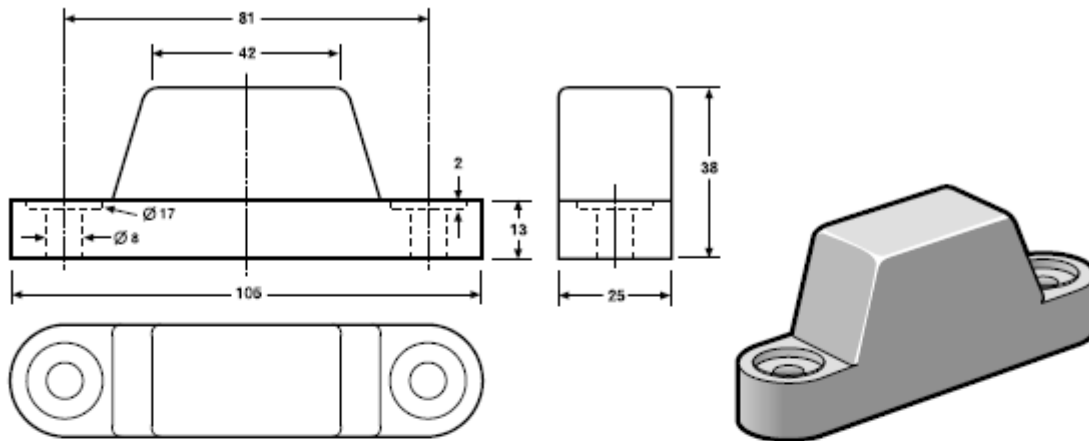
MATERIAL: NATURAL/SBR RUBBER COMPOUND

All Dimensions are in MILLIMETRES
Dimensions can vary they are TYPICAL ONLY

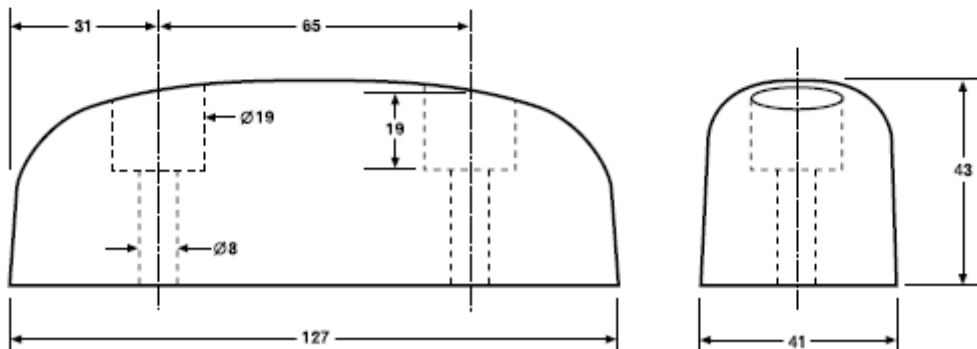
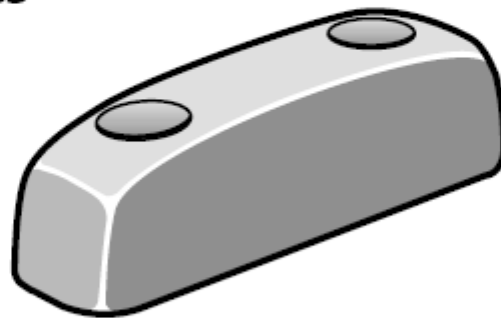
Revision C/PP004 - Aug 2004



Part Number: **RBTHB**



Part Number: **RB5**



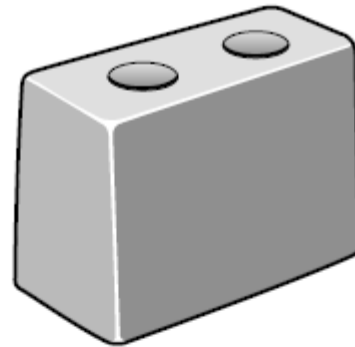
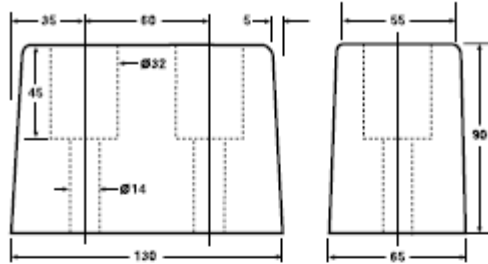
MATERIAL: NATURAL/SBR RUBBER COMPOUND

All Dimensions are in MILLIMETRES
Dimensions can vary they are TYPICAL ONLY

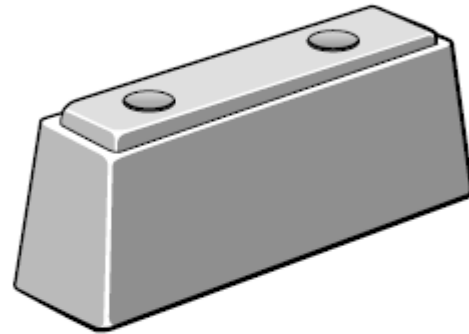
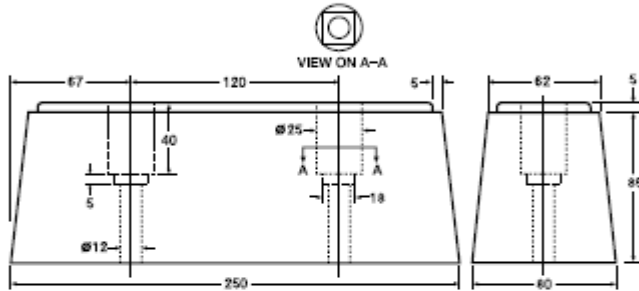
Revision C/PP006 - Aug 2004



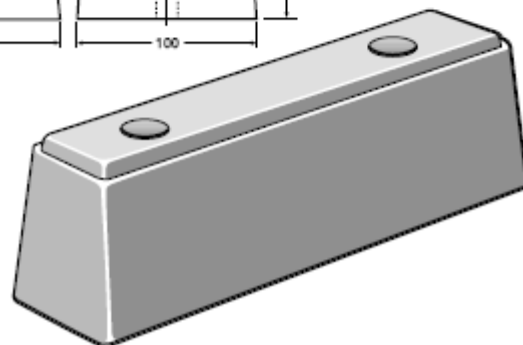
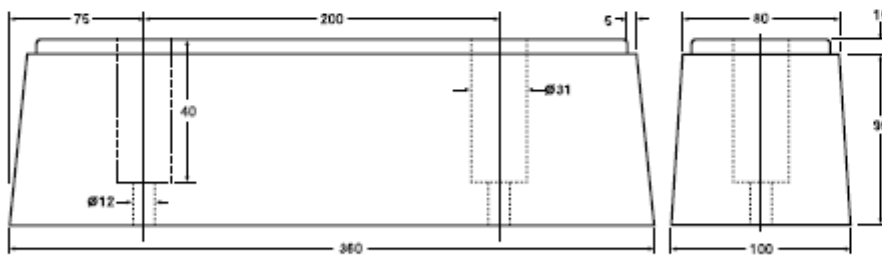
Part Number: **RB130**



Part Number: **RB250**



Part Number: **RB360**



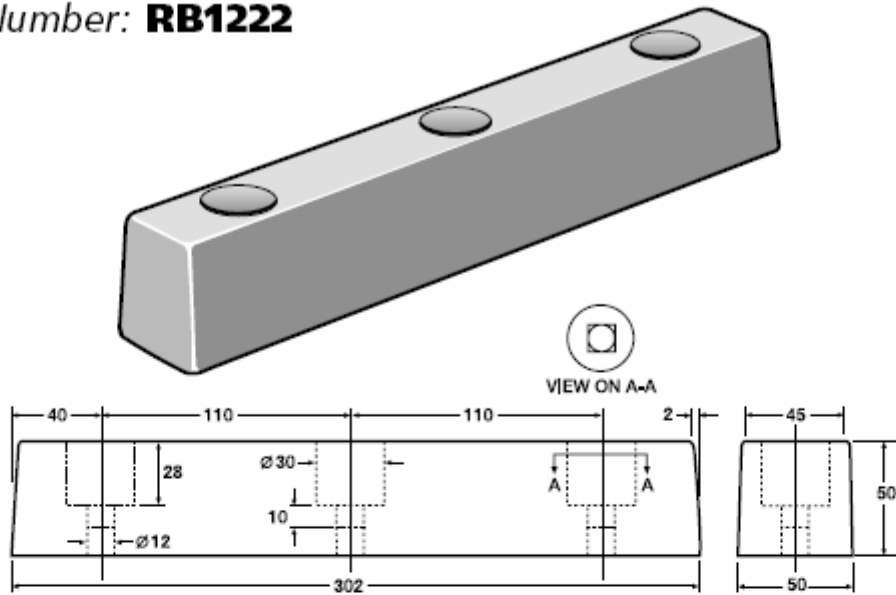
MATERIAL: NATURAL/SBR RUBBER COMPOUND

All Dimensions are in MILLIMETRES
Dimensions can vary they are TYPICAL ONLY

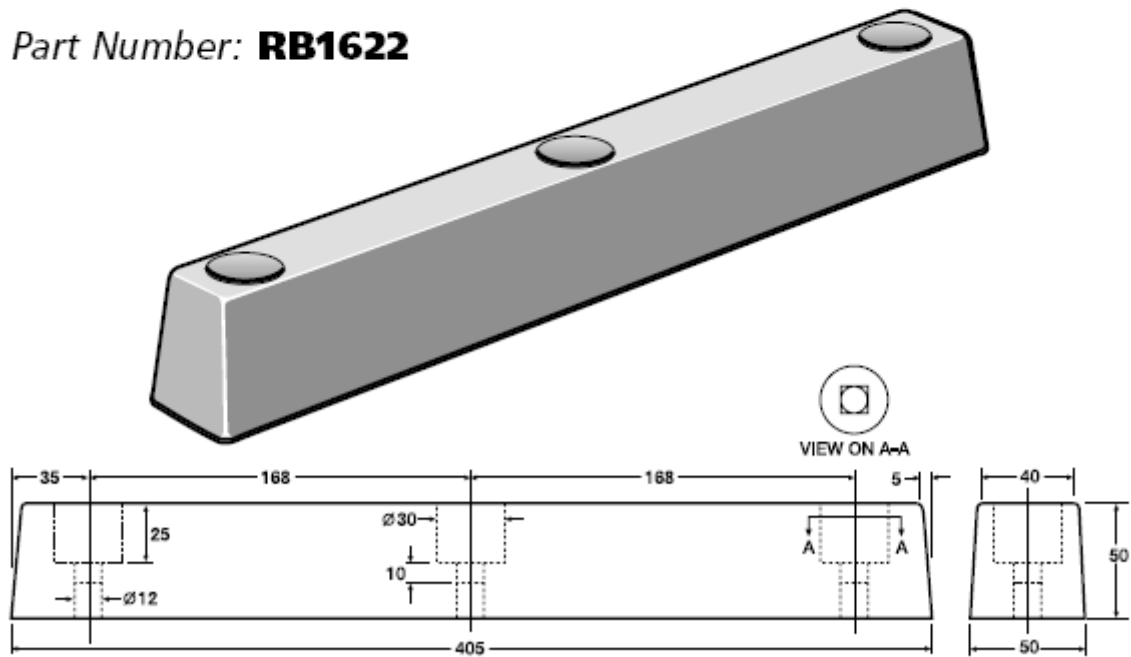
Revision C/PP007 - Aug 2004



Part Number: **RB1222**



Part Number: **RB1622**



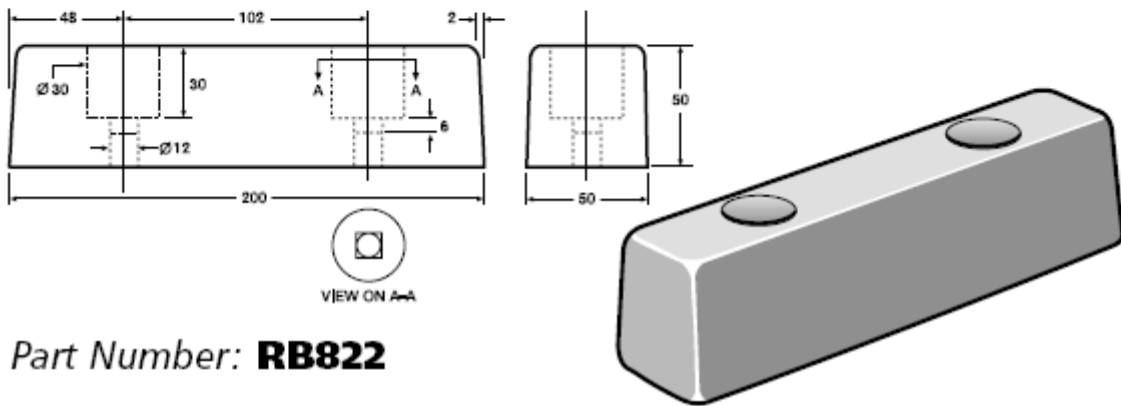
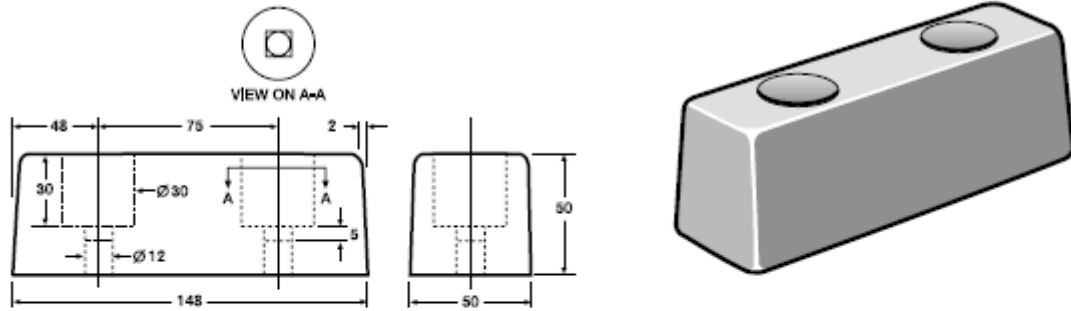
MATERIAL: NATURAL/SBR RUBBER COMPOUND

All Dimensions are in MILLIMETRES
Dimensions can vary they are TYPICAL ONLY

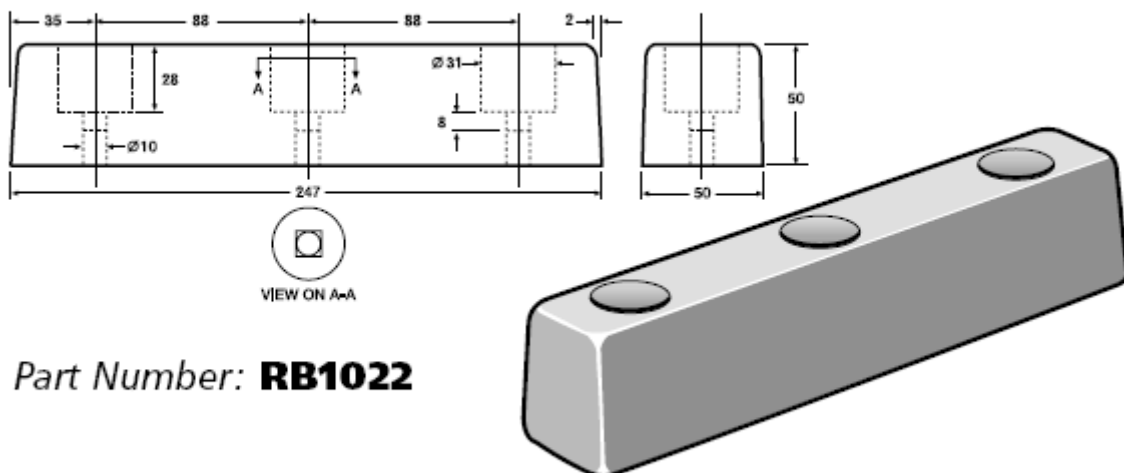
Revision C/PP008 - Aug 2004



Part Number: **RB622**



Part Number: **RB822**



Part Number: **RB1022**

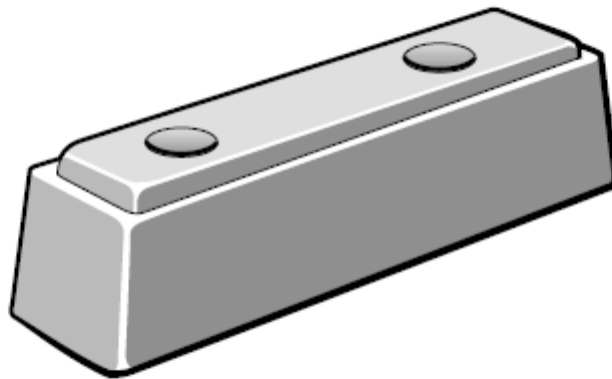
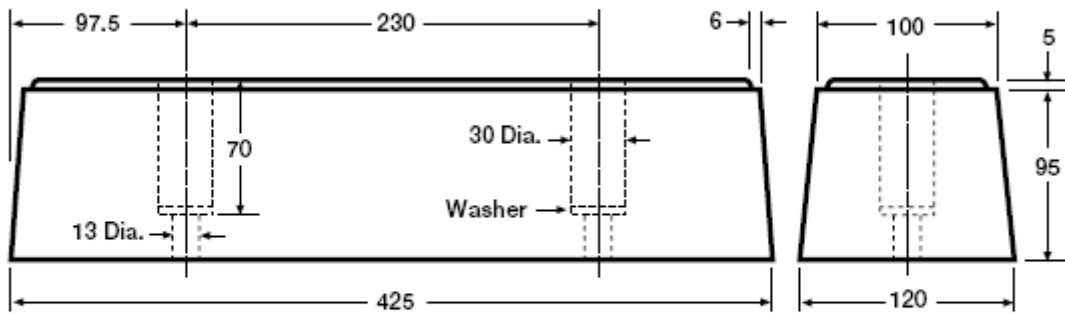
MATERIAL: NATURAL/SBR RUBBER COMPOUND

All Dimensions are in MILLIMETRES
Dimensions can vary they are TYPICAL ONLY

Revision C/PP009 - Aug 2004



Part Number: **RB425 x 120**



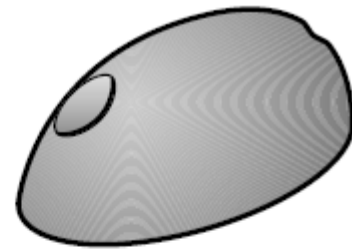
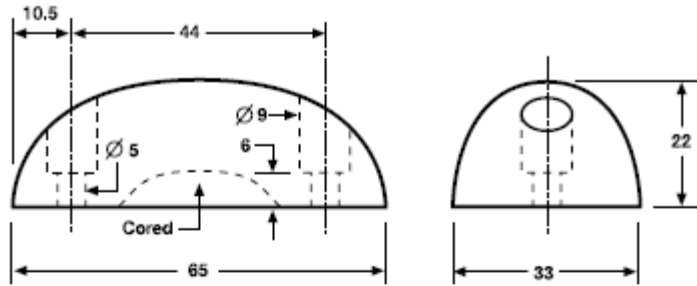
MATERIAL: NATURAL/SBR RUBBER COMPOUND

All Dimensions are in MILLIMETRES
Dimensions can vary they are TYPICAL ONLY

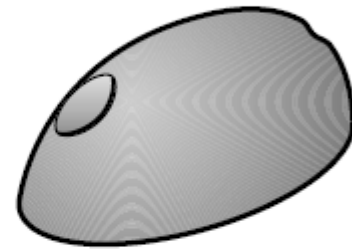
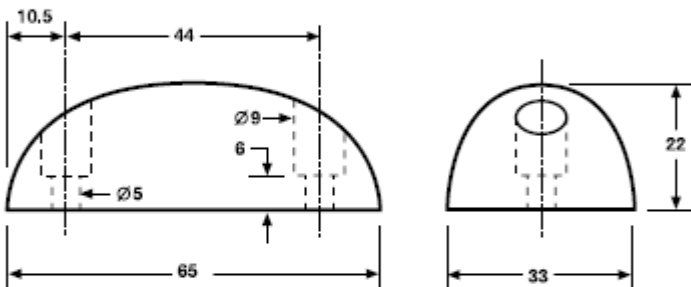
Revision C/PP0010 - Aug 2004



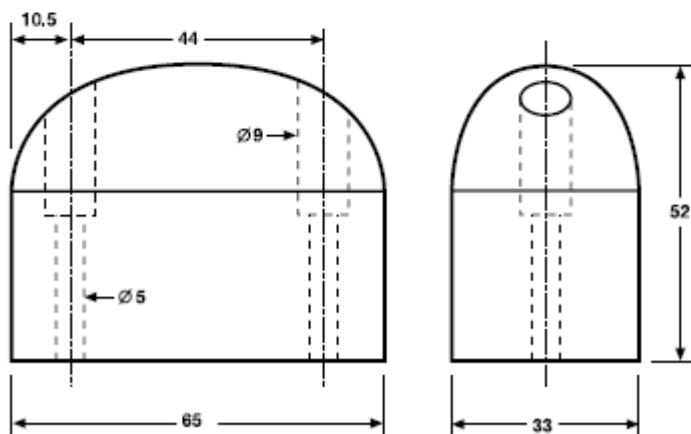
Part Number: **RB2.5**



Part Number: **RB2.5 SOLID**



Part Number: **RB2.5 HD**



MATERIAL: NATURAL/SBR RUBBER COMPOUND

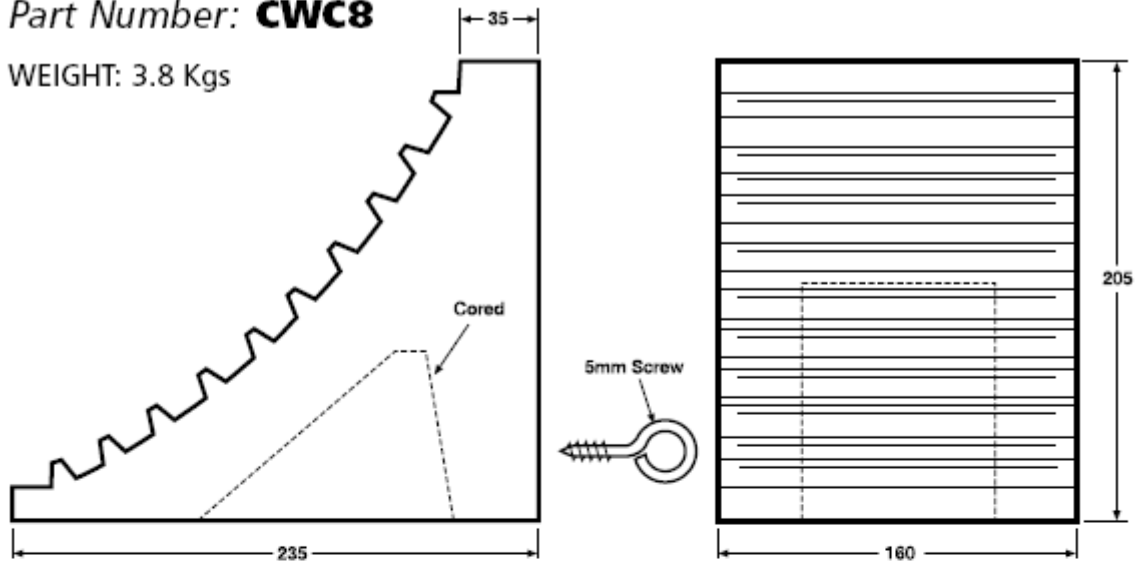
All Dimensions are in MILLIMETRES
Dimensions can vary they are TYPICAL ONLY

Revision C/PP0011 - Aug 2004

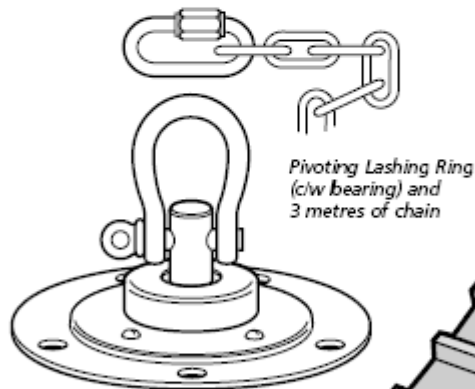


Part Number: **CWC8**

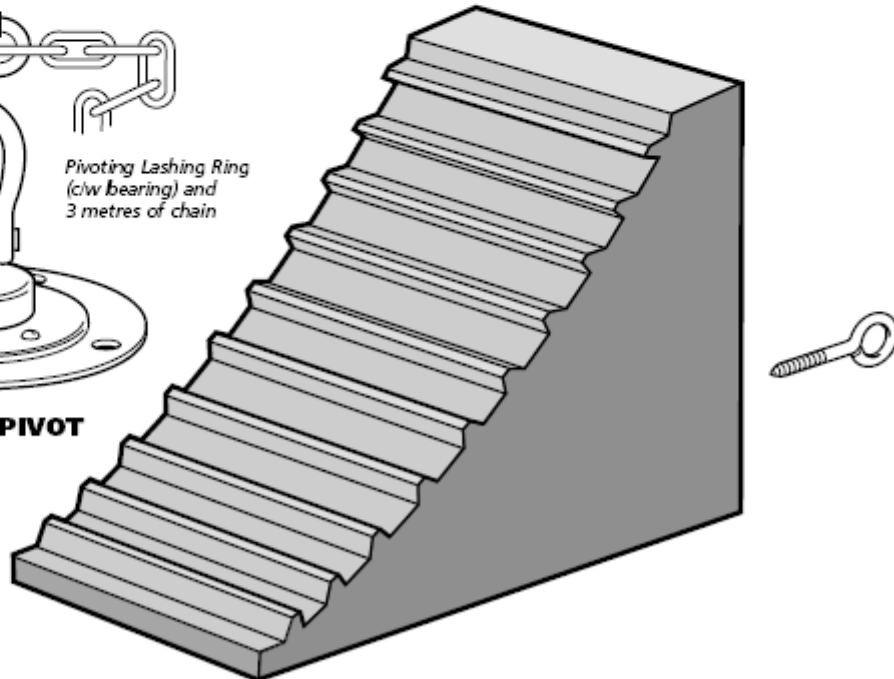
WEIGHT: 3.8 Kgs



Part Number: **SP.CH.3M**



Part Number: **PIVOT**



MATERIAL: NATURAL/SBR RUBBER COMPOUND

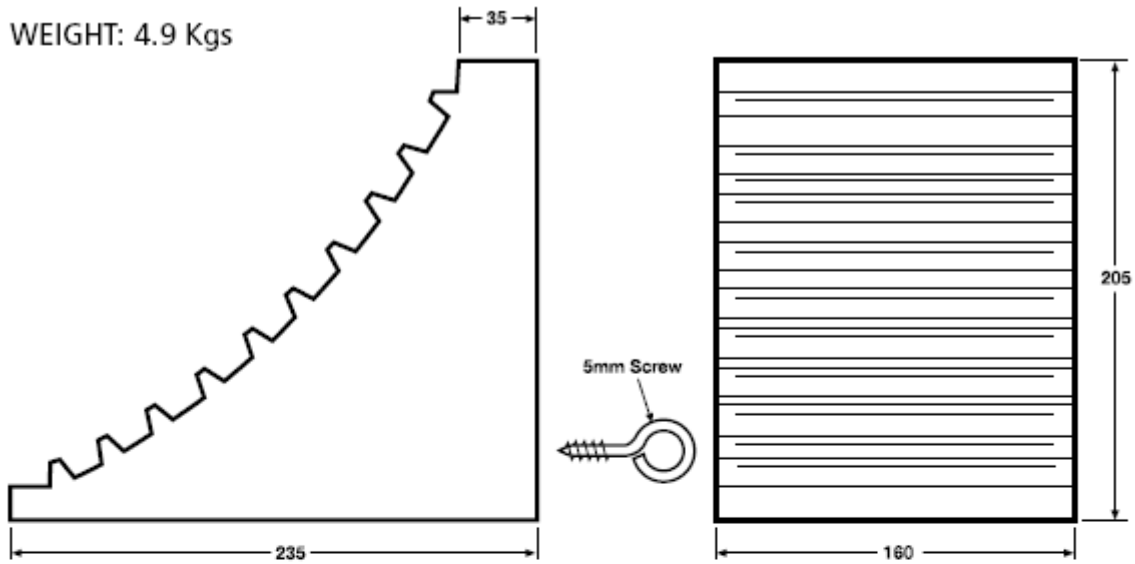
All Dimensions are in MILLIMETRES
Dimensions can vary they are TYPICAL ONLY

Revision C/PP0012 - Aug 2004

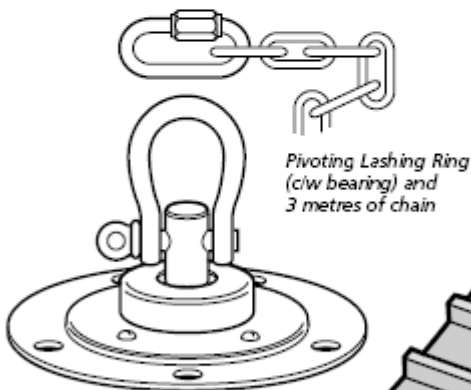


Part Number: **CWC8 SOLID**

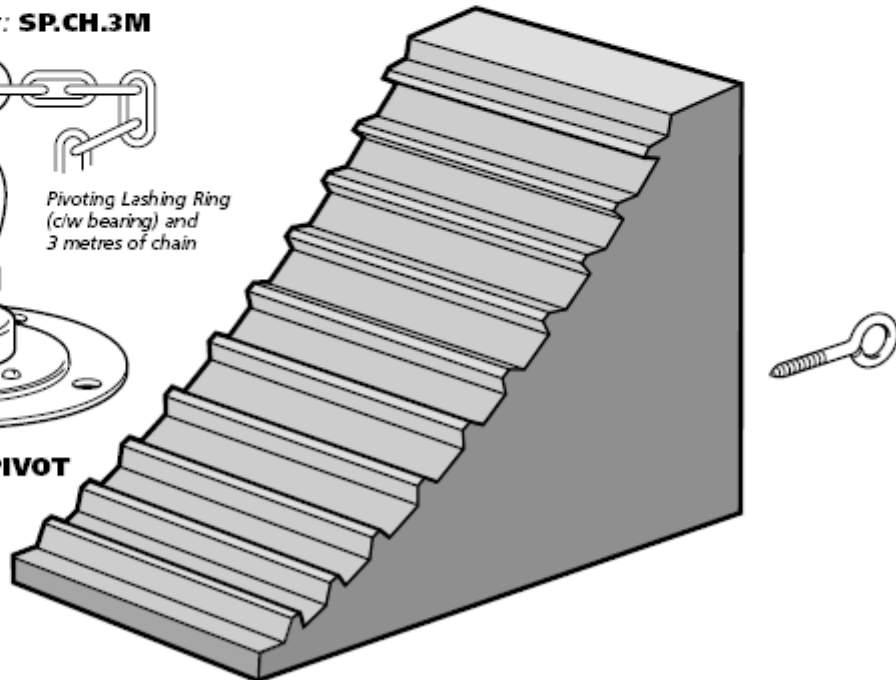
WEIGHT: 4.9 Kgs



Part Number: **SP.CH.3M**



Part Number: **PIVOT**



MATERIAL: NATURAL/SBR RUBBER COMPOUND

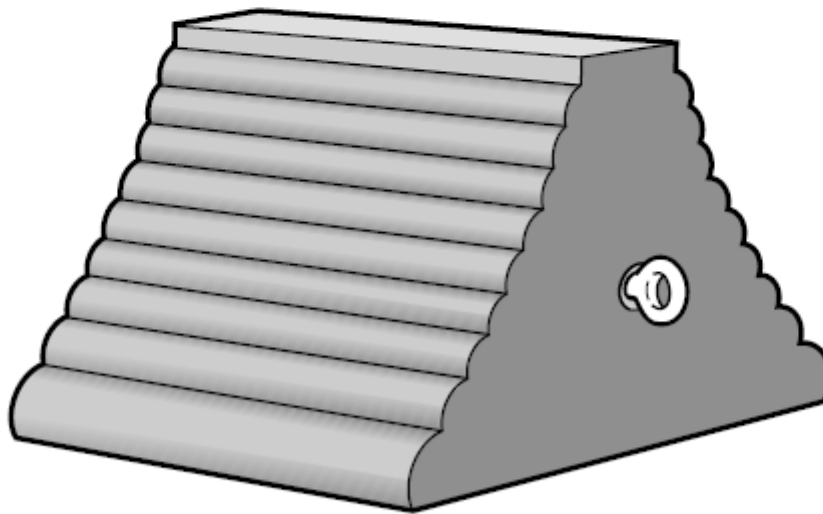
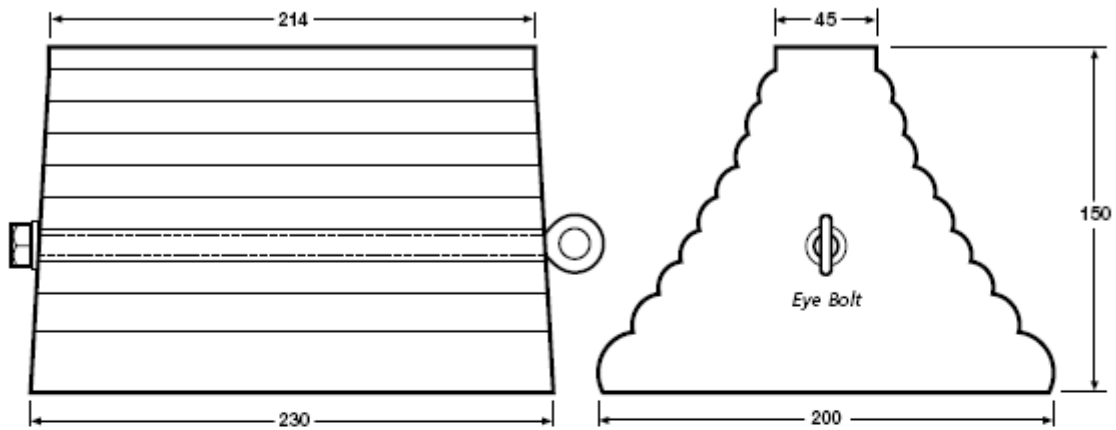
All Dimensions are in MILLIMETRES
Dimensions can vary they are TYPICAL ONLY

Revision C/PP0013 - Aug 2004



Part Number: **CWC9**

WEIGHT: 3.5 Kgs



MATERIAL: NATURAL/SBR RUBBER COMPOUND

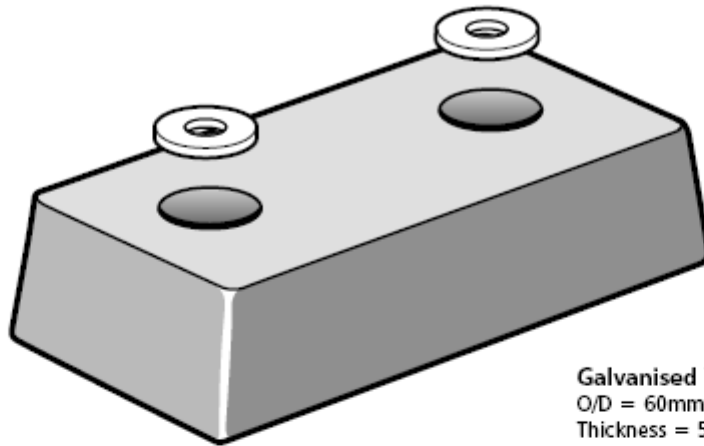
All Dimensions are in MILLIMETRES
Dimensions can vary they are TYPICAL ONLY

Revision C/PP0014 - Aug 2004



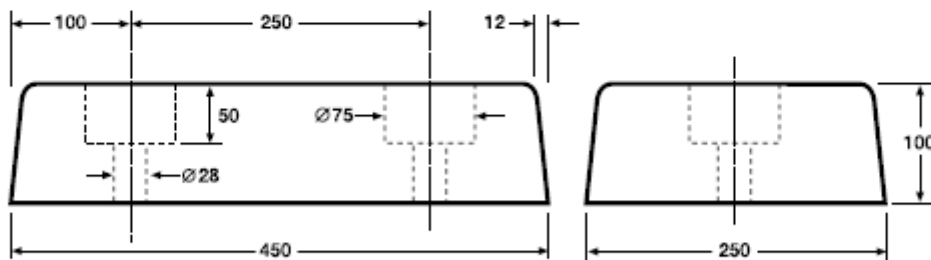
Part Number: **DB1810**

WEIGHT: 15 Kgs



Galvanised Washer
O/D = 60mm, I/D = 22mm
Thickness = 5mm

Part Number: **DBWasher**
Available as separate item



MATERIAL: NATURAL/SBR RUBBER COMPOUND

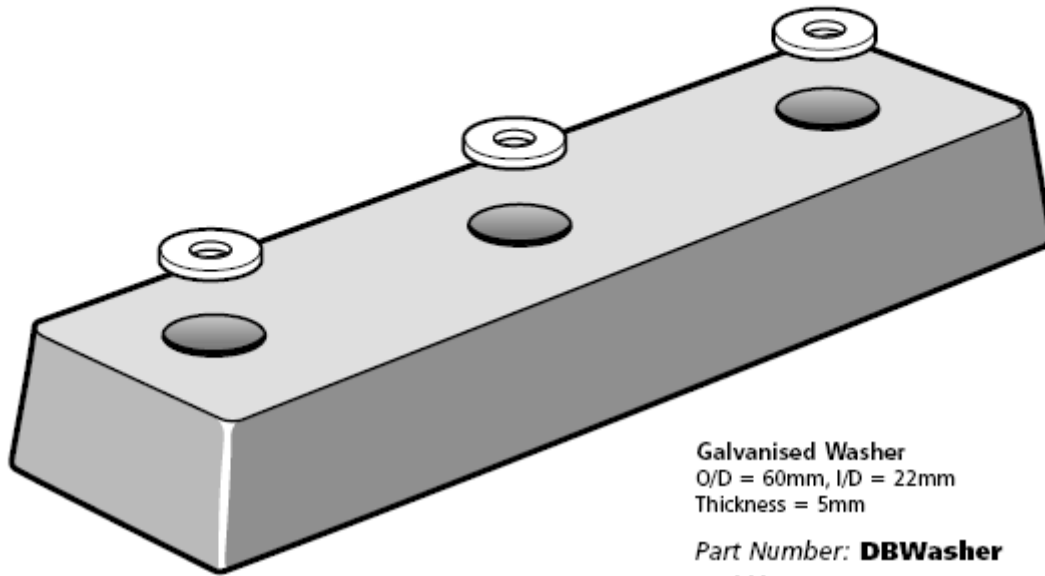
All Dimensions are in MILLIMETRES
Dimensions can vary they are TYPICAL ONLY

Revision C/PP0015 - Aug 2004



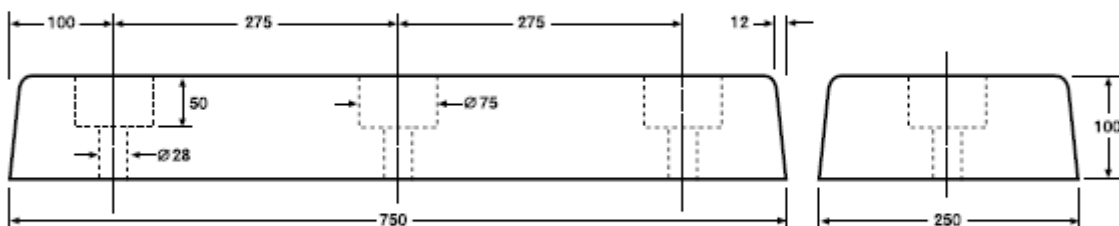
Part Number: **DB3010**

WEIGHT: 27 Kgs



Galvanised Washer
O/D = 60mm, I/D = 22mm
Thickness = 5mm

Part Number: **DBWasher**
Available as separate item



MATERIAL: NATURAL/SBR RUBBER COMPOUND

All Dimensions are in MILLIMETRES
Dimensions can vary they are TYPICAL ONLY

Revision C/PP0016 - Aug 2004



Part Number: DB1818L

WEIGHT: 18 Kgs

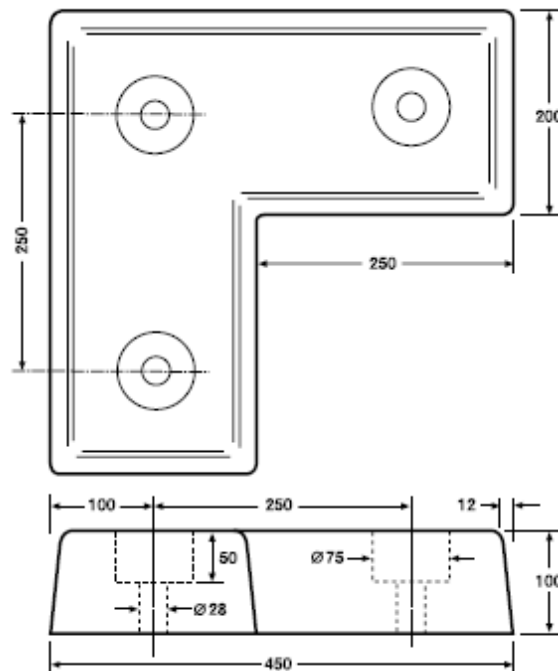
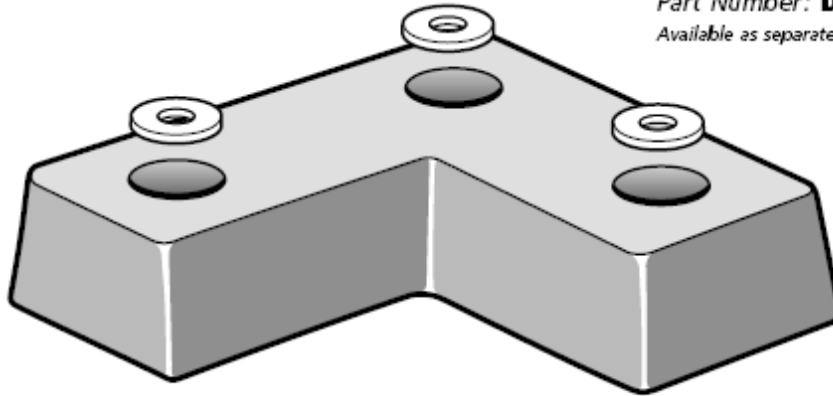
Galvanised Washer

O/D = 60mm, I/D = 22mm

Thickness = 5mm

Part Number: DBWasher

Available as separate item



MATERIAL: NATURAL/SBR RUBBER COMPOUND

All Dimensions are in MILLIMETRES
Dimensions can vary they are TYPICAL ONLY

Revision C/PP0017 - Aug 2004

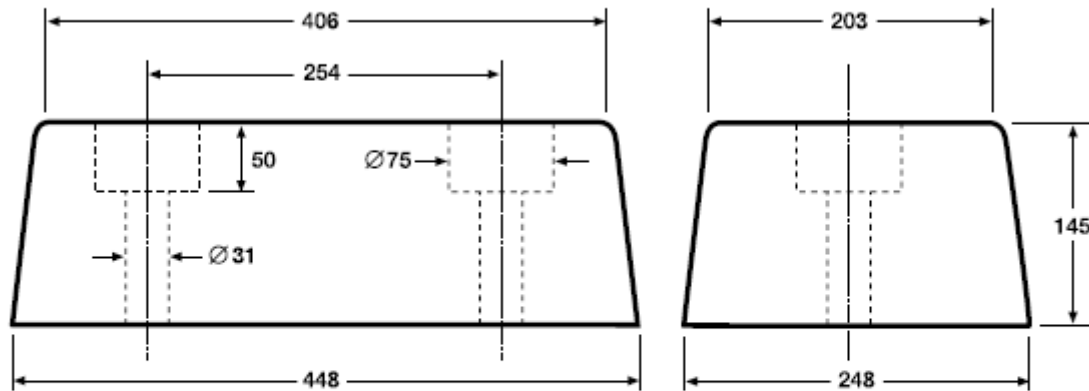
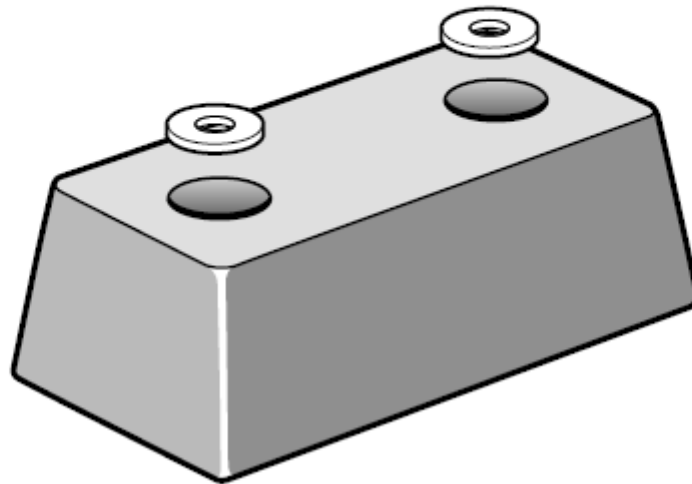


Part Number: **DB18106**

WEIGHT: 19 Kgs

Galvanised Washer
O/D = 60mm, I/D = 22mm
Thickness = 5mm

Part Number: **DBWasher**
Available as separate item



MATERIAL: NATURAL/SBR RUBBER COMPOUND

All Dimensions are in MILLIMETRES
Dimensions can vary they are TYPICAL ONLY

Revision C/PP0018 - Aug 2004

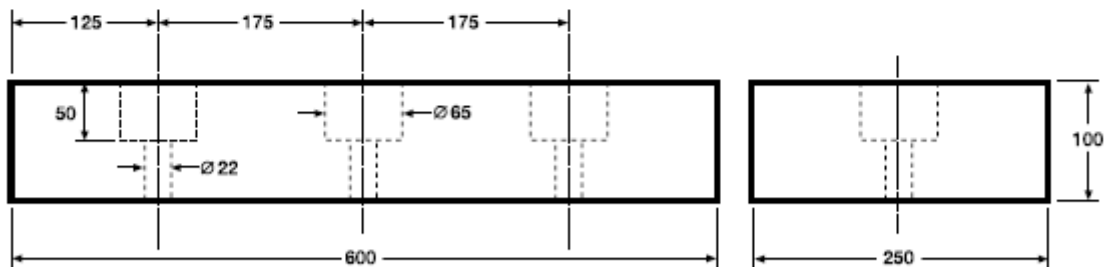
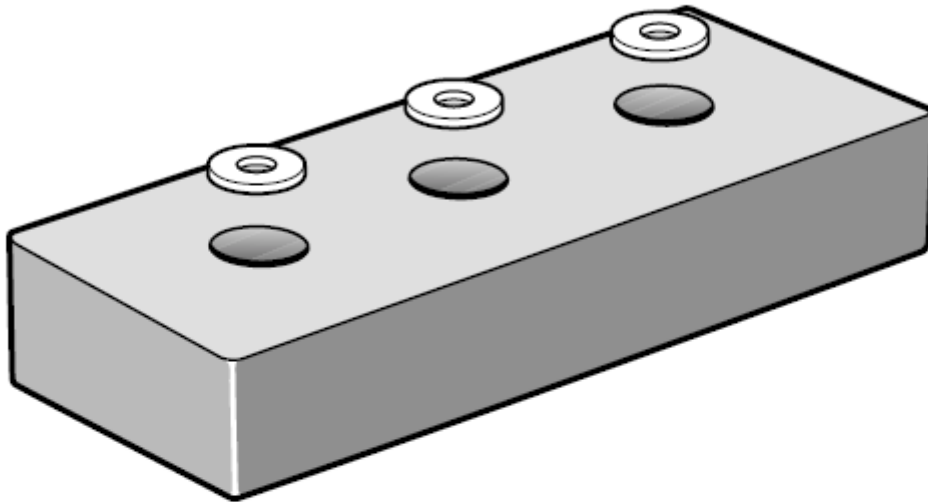


Part Number: **DB2410**

WEIGHT: 17 Kgs

Galvanised Washer
O/D = 60mm, I/D = 22mm
Thickness = 5mm

Part Number: **DBWasher**
Available as separate item



MATERIAL: NATURAL/SBR RUBBER COMPOUND

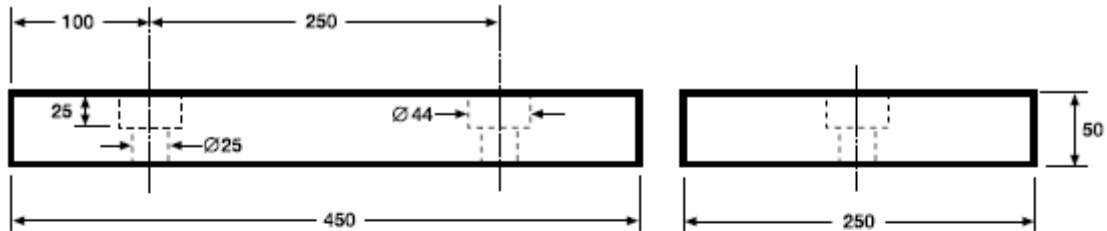
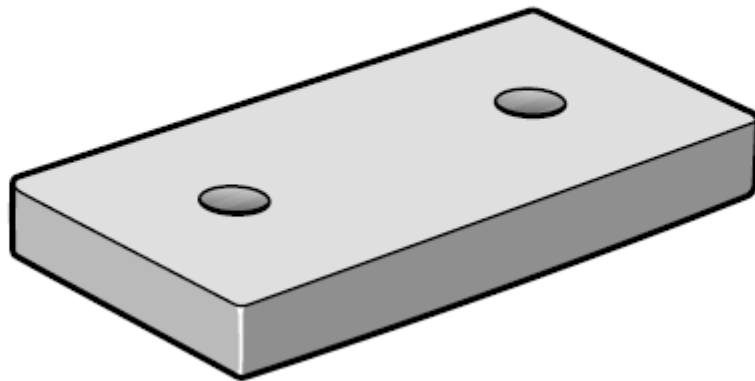
All Dimensions are in MILLIMETRES
Dimensions can vary they are TYPICAL ONLY

Revision C/PP0019 - Aug 2004



Part Number: **DB18102**

WEIGHT: 6.6 Kgs



MATERIAL: NATURAL/SBR RUBBER COMPOUND

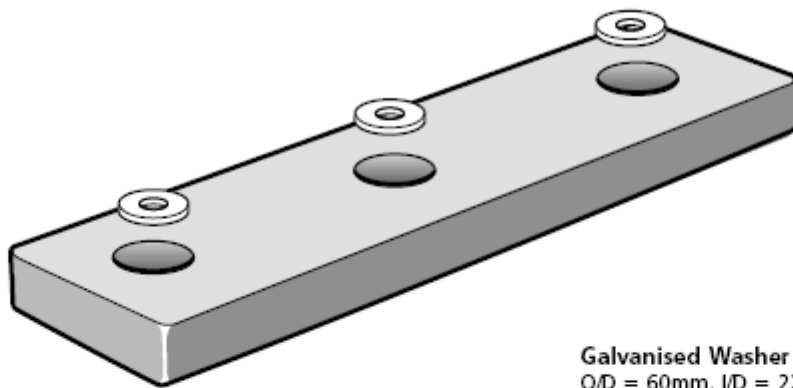
All Dimensions are in MILLIMETRES
Dimensions can vary they are TYPICAL ONLY

Revision C/PP0020 - Aug 2004



Part Number: **DB30102**

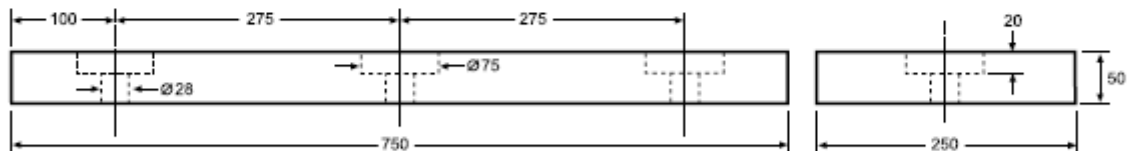
WEIGHT: 13 Kgs



Galvanised Washer
O/D = 60mm, I/D = 22mm
Thickness = 5mm

Part Number: **DBWasher**

Available as separate item



MATERIAL: NATURAL/SBR RUBBER COMPOUND

All Dimensions are in MILLIMETRES
Dimensions can vary they are TYPICAL ONLY

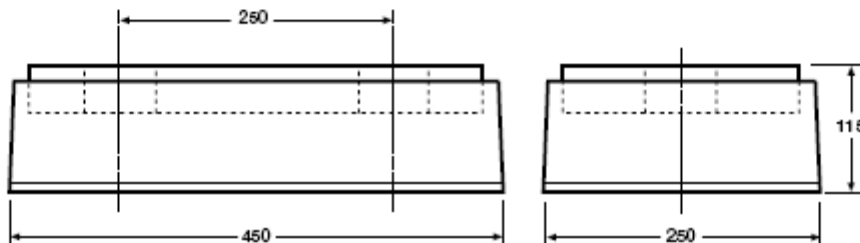
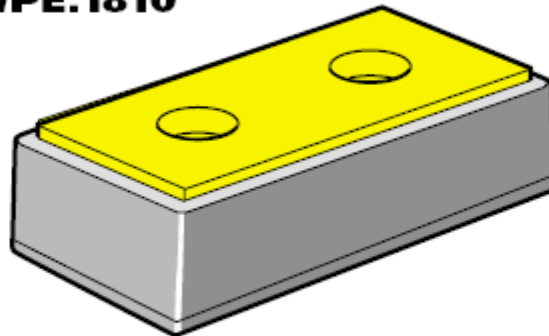
Revision C/PP0021 - Aug 2004



ULTRA HIGH MOLECULAR WEIGHT POLYETHYLENE FACED DOCK BUMPERS

Part Number: **UHMWPE.1810**

WEIGHT: 12.5 Kgs

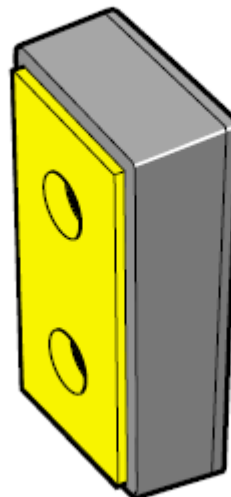


Tough High Molecular weight PE front to withstand daily punishment.

High visibility to help drivers align trailers more accurately.

Rubber backing to allow compression and save direct load onto loading bay.

Easy to fit onto existing fixtures - same hole centres as current industry standard 450mm bumpers



MATERIAL: PE/SBR RUBBER COMPOUND

All Dimensions are in MILLIMETRES
Dimensions can vary they are TYPICAL ONLY

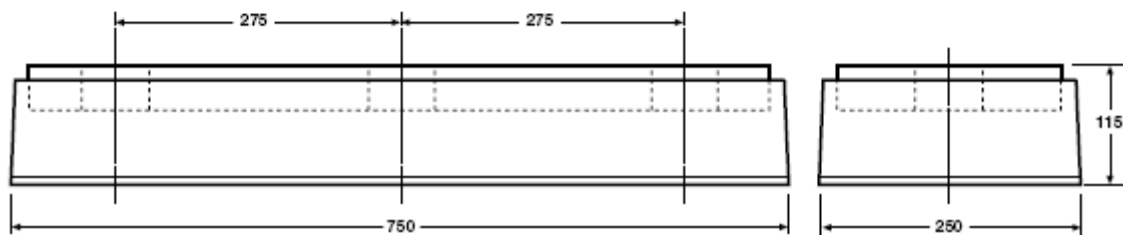
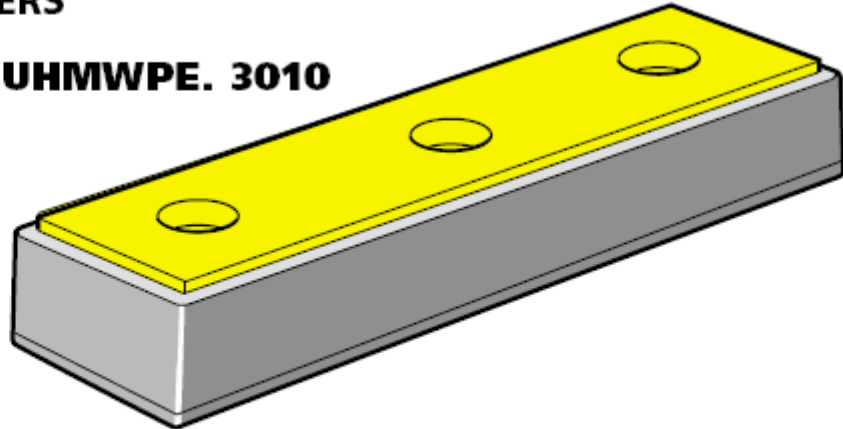
Revision C/PP0022 - Aug 2004



ULTRA HIGH MOLECULAR WEIGHT POLYETHYLENE FACED DOCK BUMPERS

Part Number: **UHMWPE. 3010**

WEIGHT: 20 Kgs

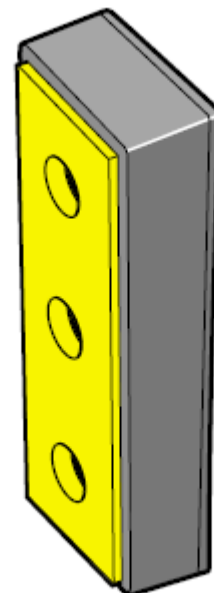


Tough High Molecular weight PE front to withstand daily punishment.

High visibility to help drivers align trailers more accurately.

Rubber backing to allow compression and save direct load onto loading bay.

Easy to fit onto existing fixtures - same hole centres as current industry standard 750mm bumpers



MATERIAL: PE/SBR RUBBER COMPOUND

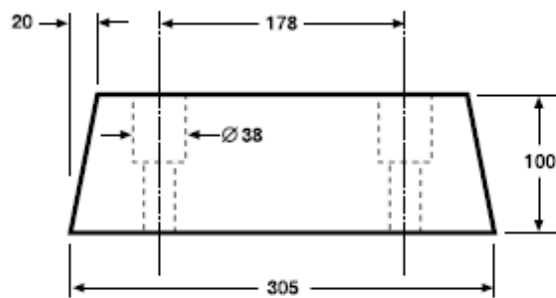
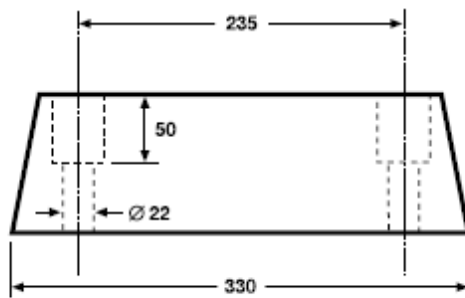
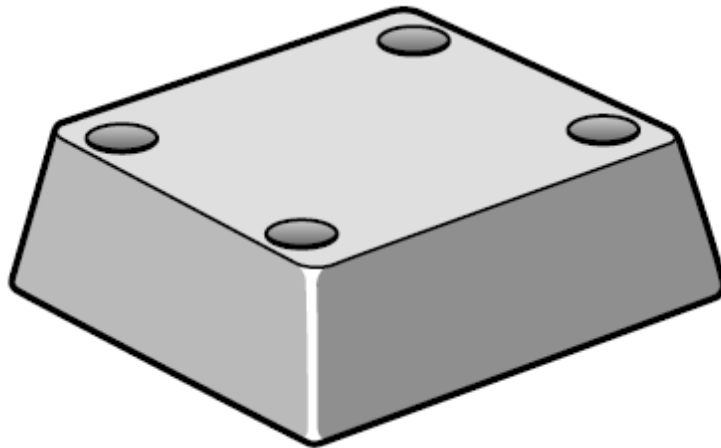
All Dimensions are in MILLIMETRES
Dimensions can vary they are TYPICAL ONLY

Revision C/PP0023 - Aug 2004



Part Number: **DB1312**

WEIGHT: 8.5 Kgs



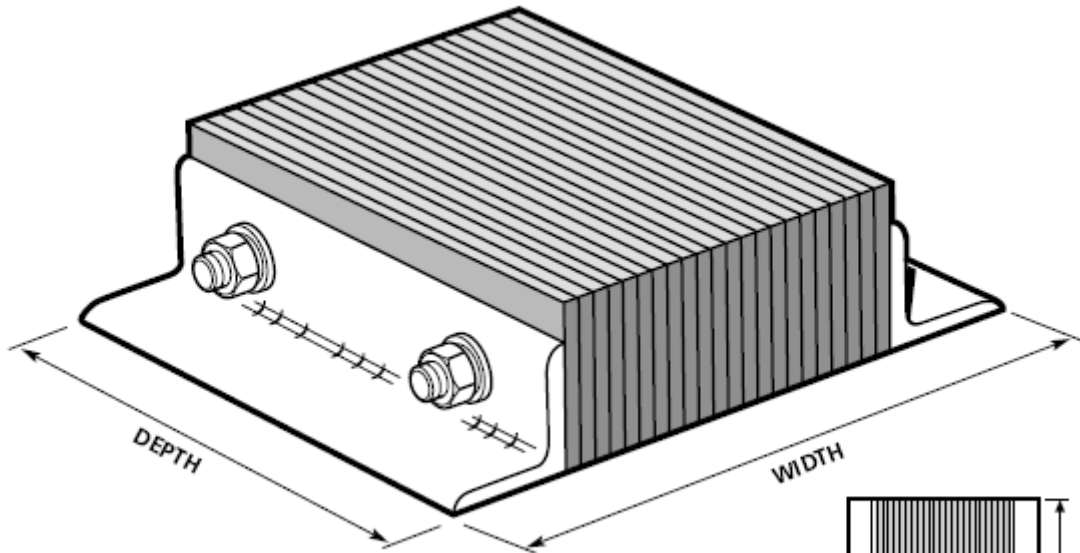
MATERIAL: NATURAL/SBR RUBBER COMPOUND

All Dimensions are in MILLIMETRES
Dimensions can vary they are TYPICAL ONLY

Revision C/PP0024 - Aug 2004

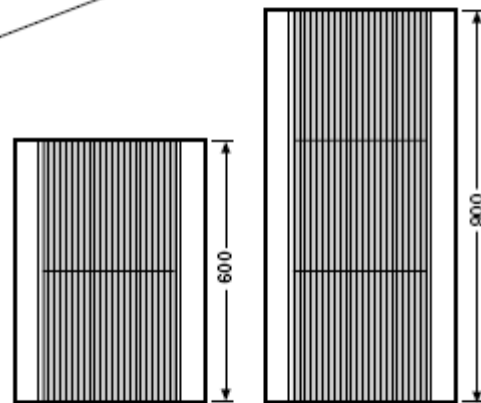


Part Number: **DB.LAMINATE**

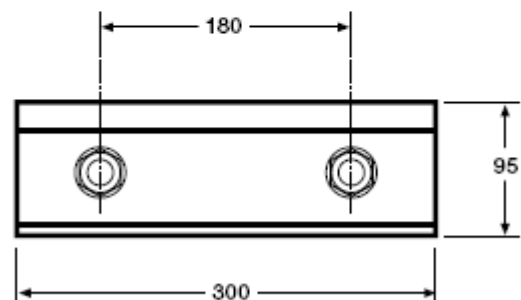
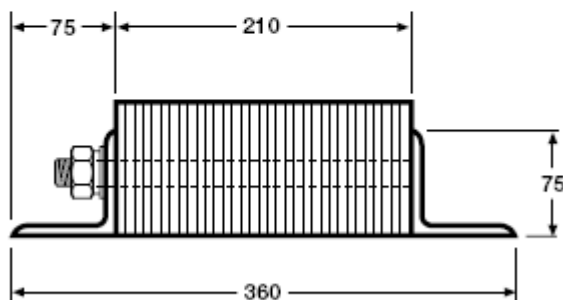


Available in:

200mm to 1000mm Widths &
300mm to 900mm Depths



Other possible Depth Variations

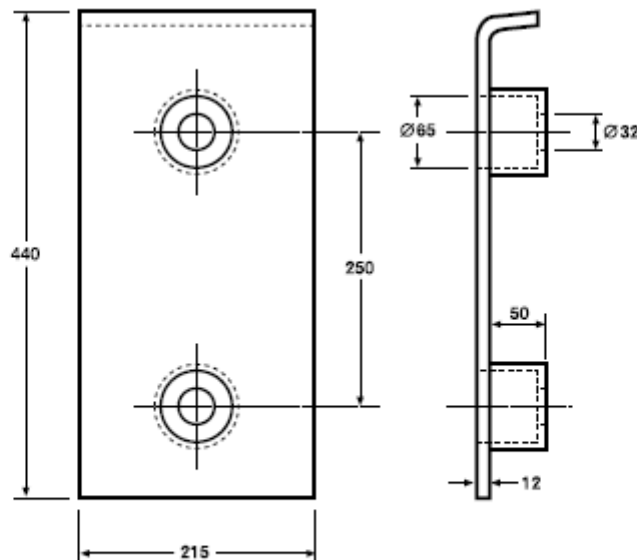
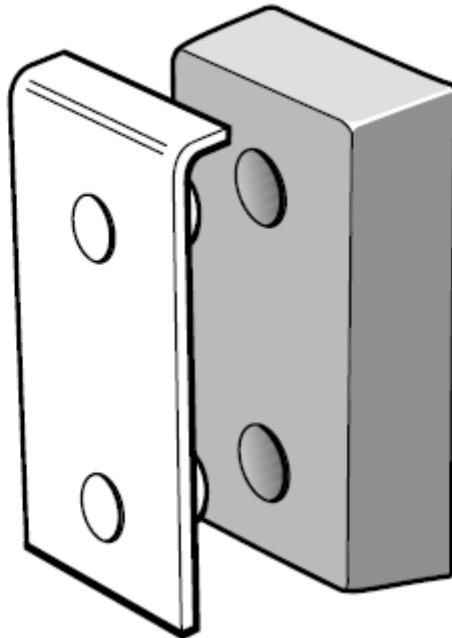


All Dimensions are in MILLIMETRES
Dimensions can vary they are TYPICAL ONLY

Revision C/PP0025 - Aug 2004



Part Number: **SP1810** - Fits DB1810



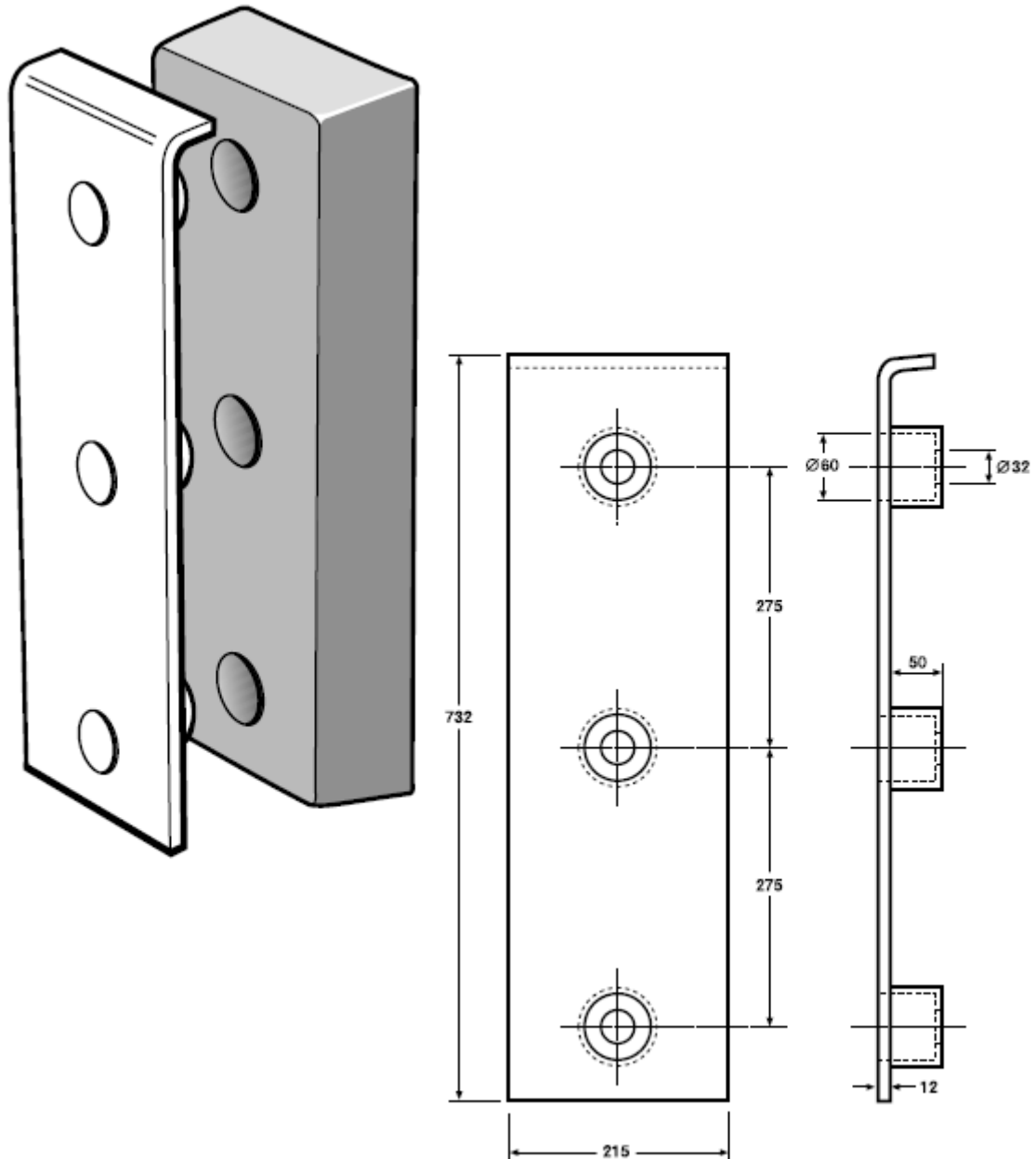
MATERIAL: STEEL

All Dimensions are in MILLIMETRES
Dimensions can vary they are TYPICAL ONLY

Revision C/PP0026 - Aug 2004



Part Number: **SP3010** - Fits DB3010



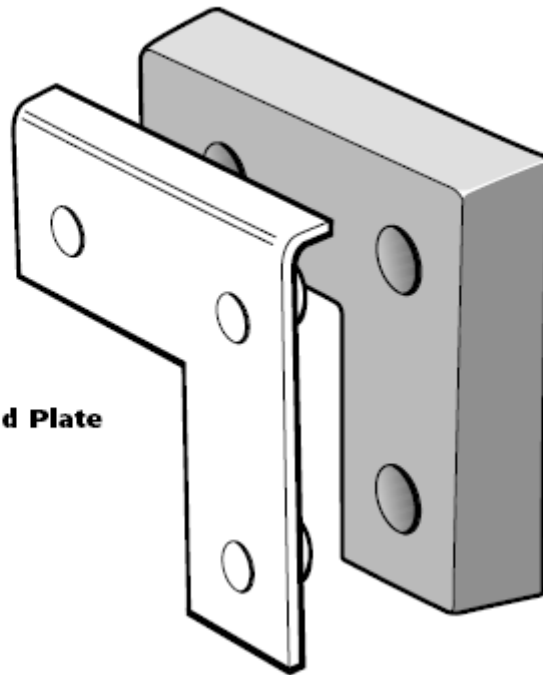
MATERIAL: STEEL

All Dimensions are in MILLIMETRES
Dimensions can vary they are TYPICAL ONLY

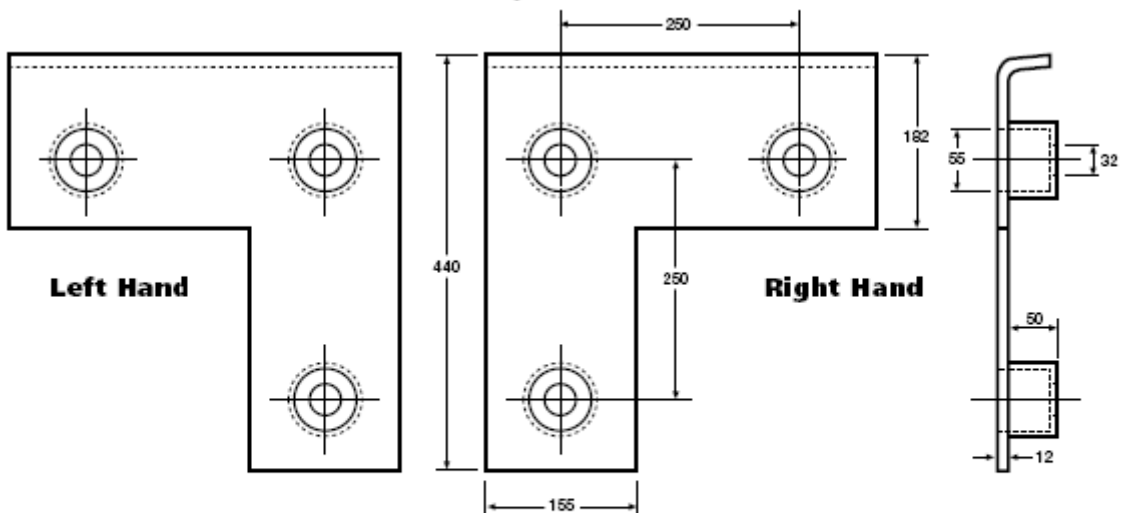
Revision C/PP0027 - Aug 2004



Part Number: **SP1818L** - Fits DB1818L



Left Hand Plate



Note: - Plates are sold in pairs and are Left and Right Handed as shown.

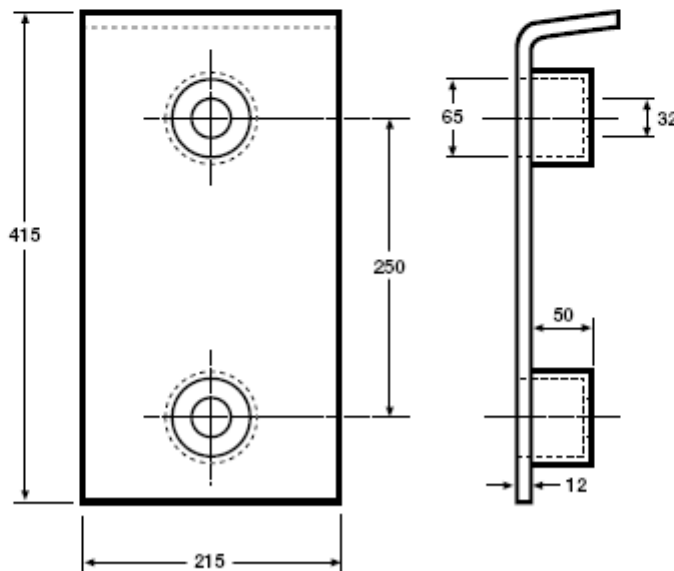
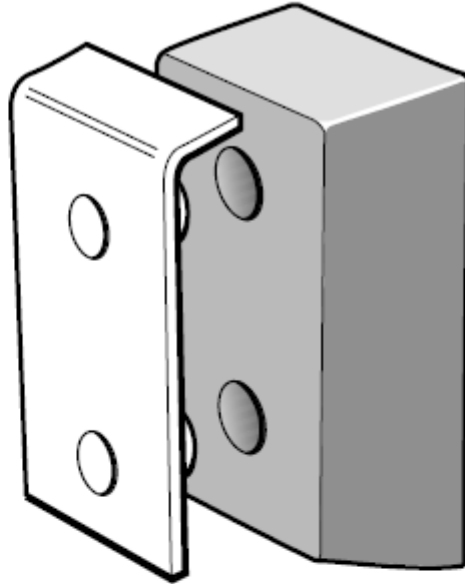
MATERIAL: STEEL

All Dimensions are in MILLIMETRES
Dimensions can vary they are TYPICAL ONLY

Revision C/PP0028 - Aug 2004



Part Number: **SP18106** - Fits DB18106



MATERIAL: STEEL

All Dimensions are in MILLIMETRES
Dimensions can vary they are TYPICAL ONLY

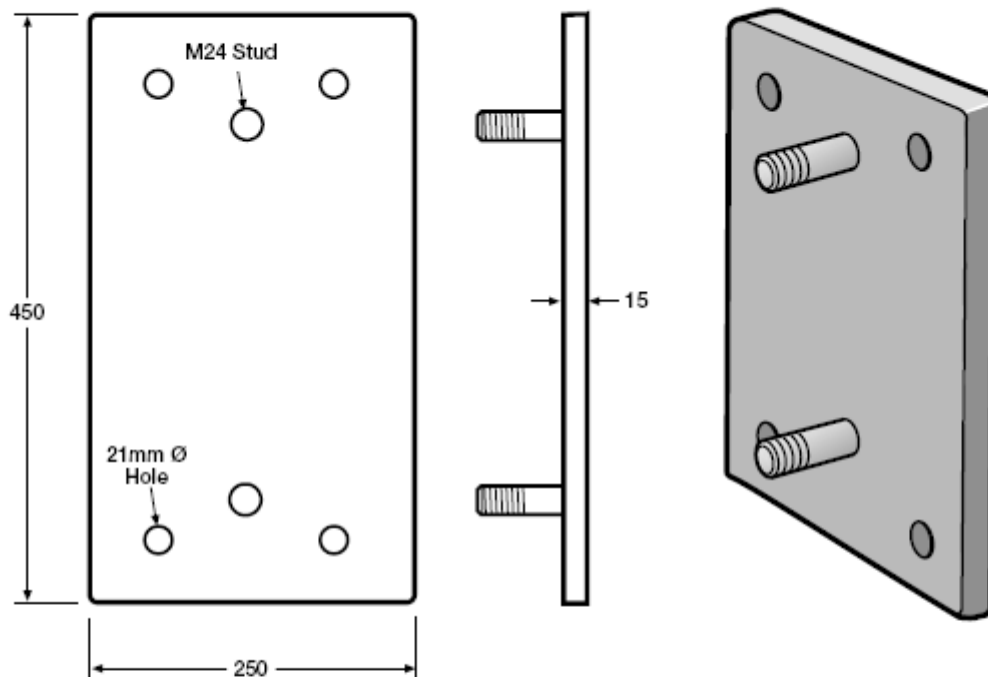
Revision C/PP0029 - Aug 2004



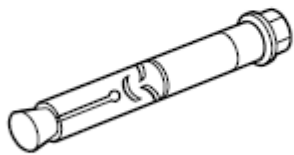
Part Number: SP/BP18

WEIGHT: 15 Kgs

To suit Rubber Dock Bumper DB1810 & UHMWPE1810



Fischer 33-45039 FHS Bolt 18 x 80 S
for fixing backplate to wall.



MATERIALS: GALVANISED STEEL 15mm THICK

All Dimensions are in MILLIMETRES
Dimensions can vary they are TYPICAL ONLY

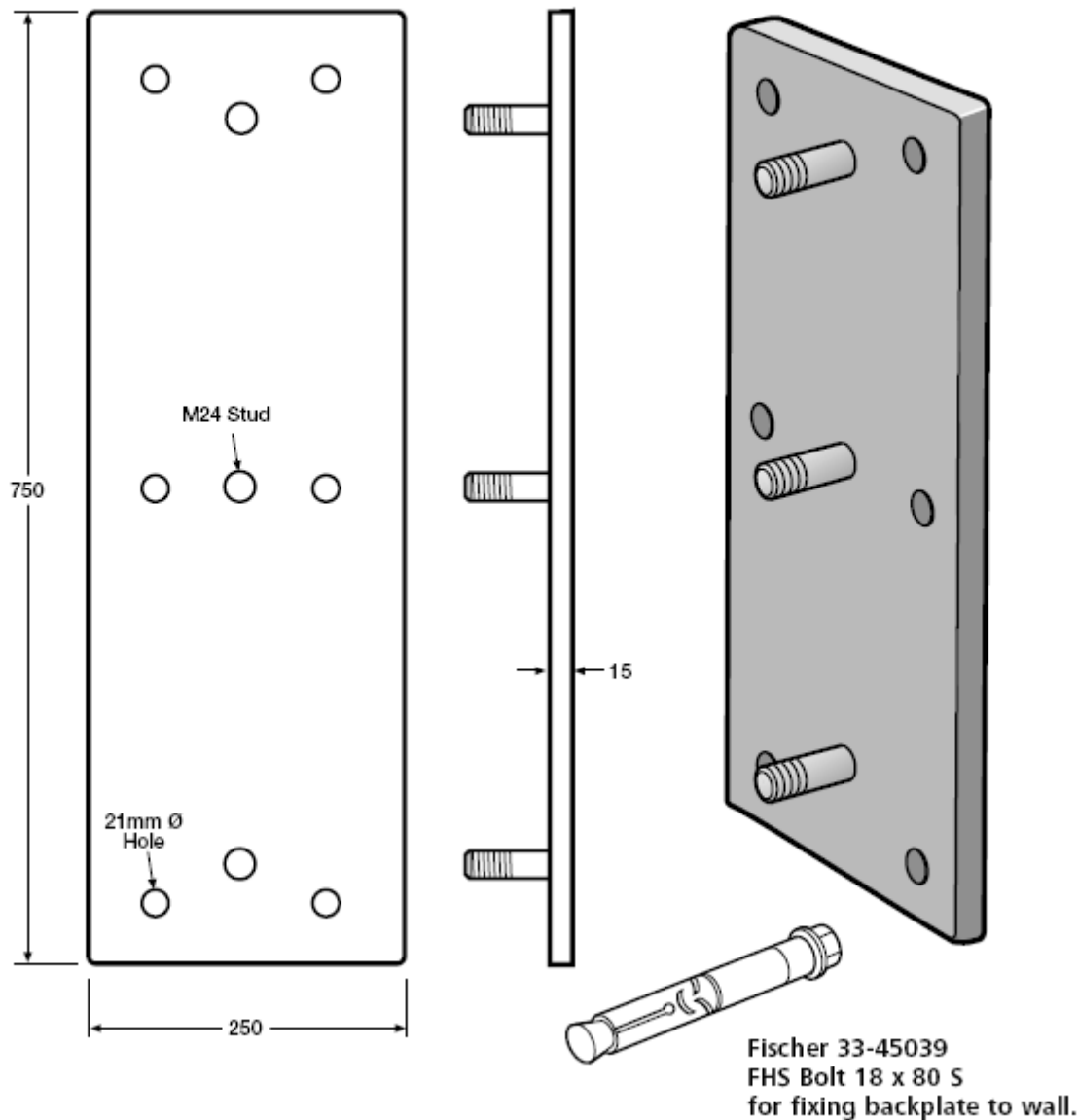
Revision C/PP0030 - Aug 2004



Part Number: **SP/BP30**

WEIGHT: 24 Kgs

To suit Rubber Dock Bumper DB3010 & UHMWPE3010



MATERIALS: GALVANISED STEEL 15mm THICK

All Dimensions are in MILLIMETRES
Dimensions can vary they are TYPICAL ONLY

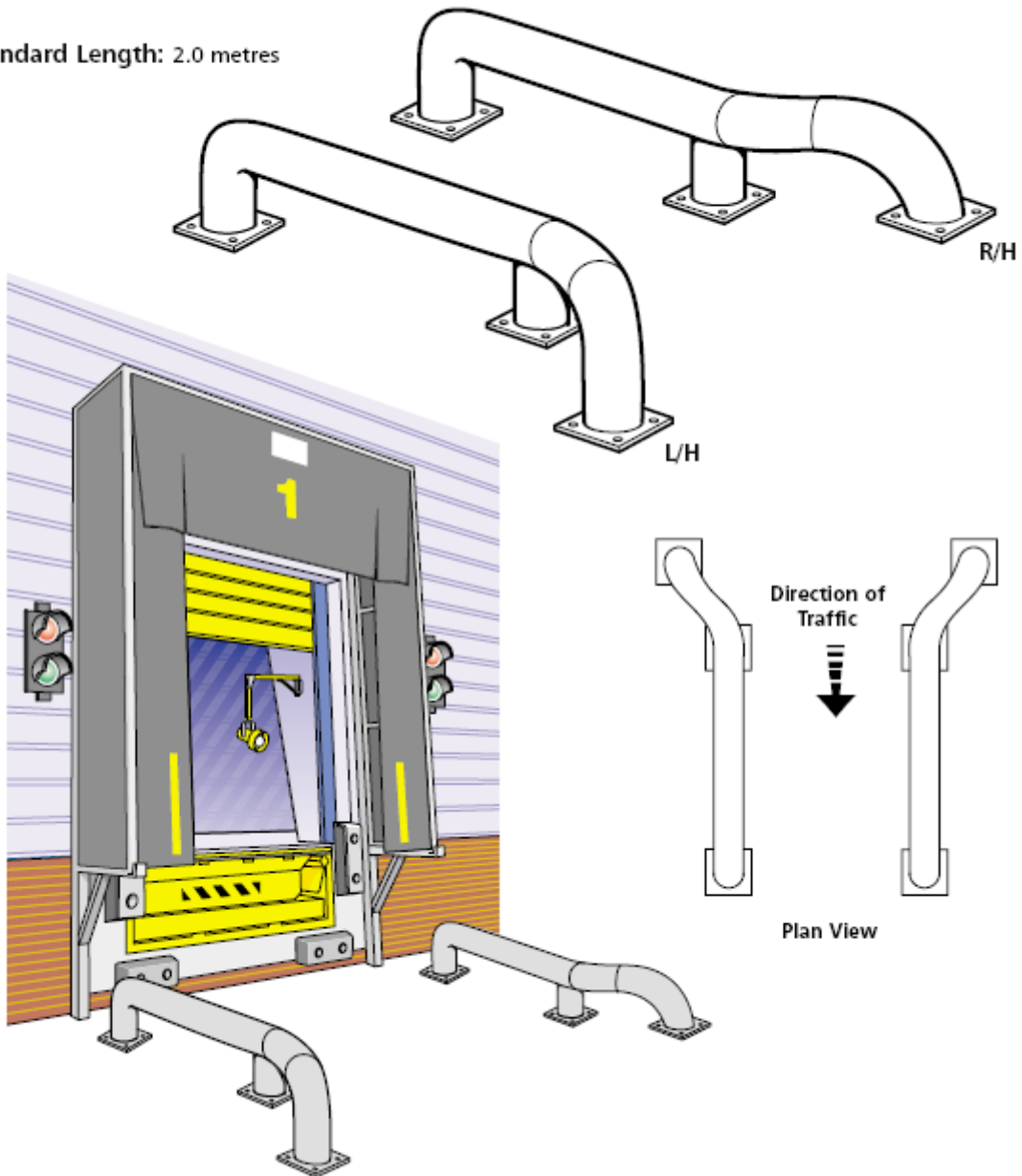
Revision C/PP0031 - Aug 2004



CRANKED WHEEL GUIDES - Bolt Down Type

Part Number: **SP.WG.CRANKED**

Standard Length: 2.0 metres

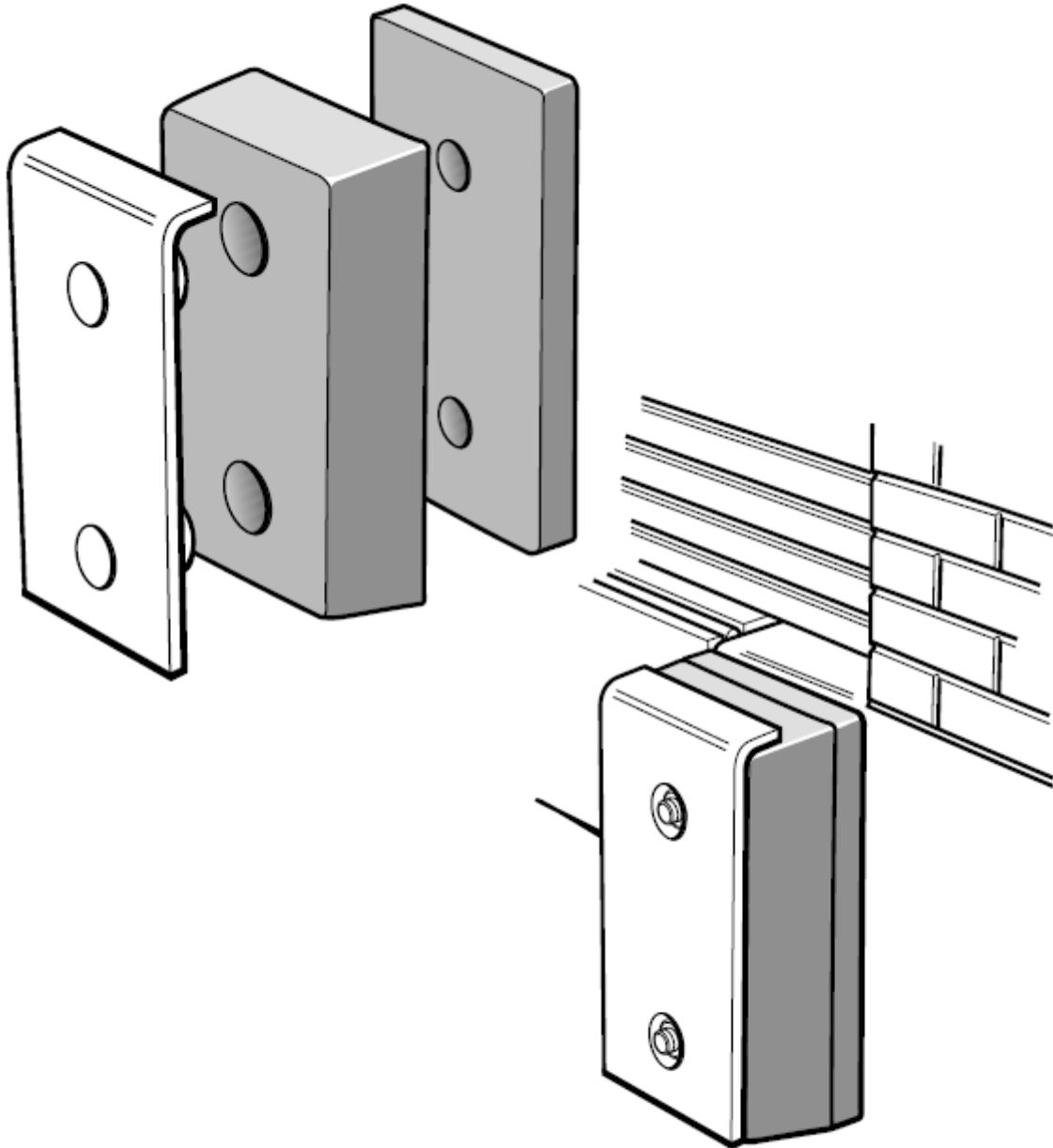


Dimensions can vary they are TYPICAL ONLY

Revision C/PP0032 - Aug 2004



Part Numbers: **SP1810/DB1810/DB18102**



MATERIAL: STEEL & NATURAL/SBR RUBBER COMPOUND

All Dimensions are in MILLIMETRES
Dimensions can vary they are TYPICAL ONLY

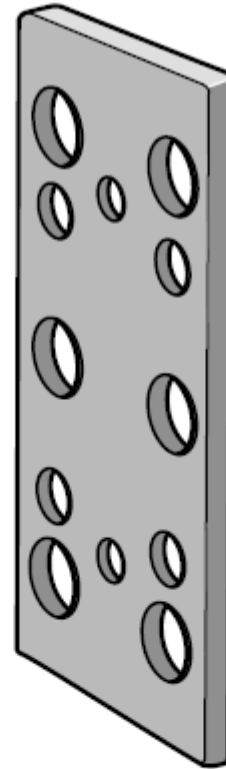
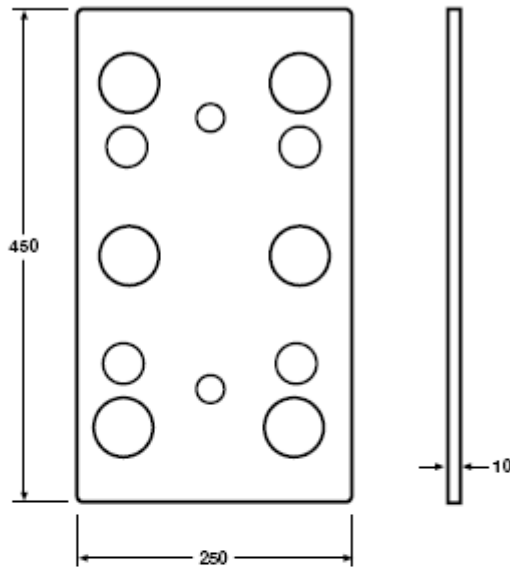
Revision C/PP0033 - Aug 2004



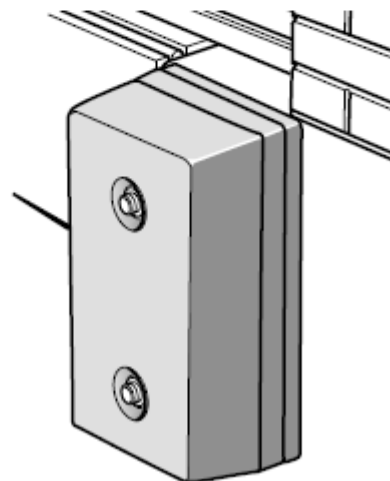
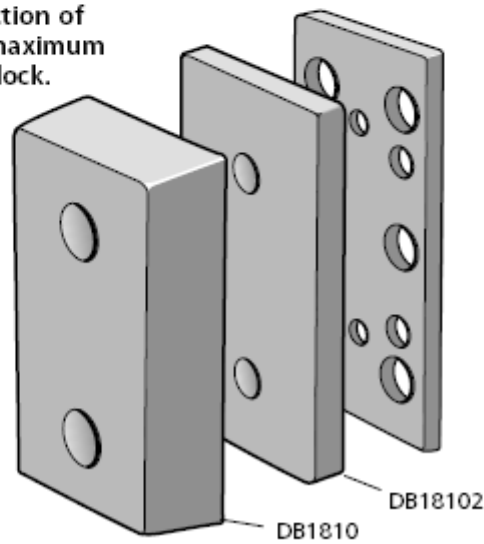
Part Number: DB1810/10

WEIGHT: 1.5 Kgs

10mm Shim to suit DB1810 Standard Dock Bumper



For accurate projection of Dock Bumper for maximum protection of the dock.



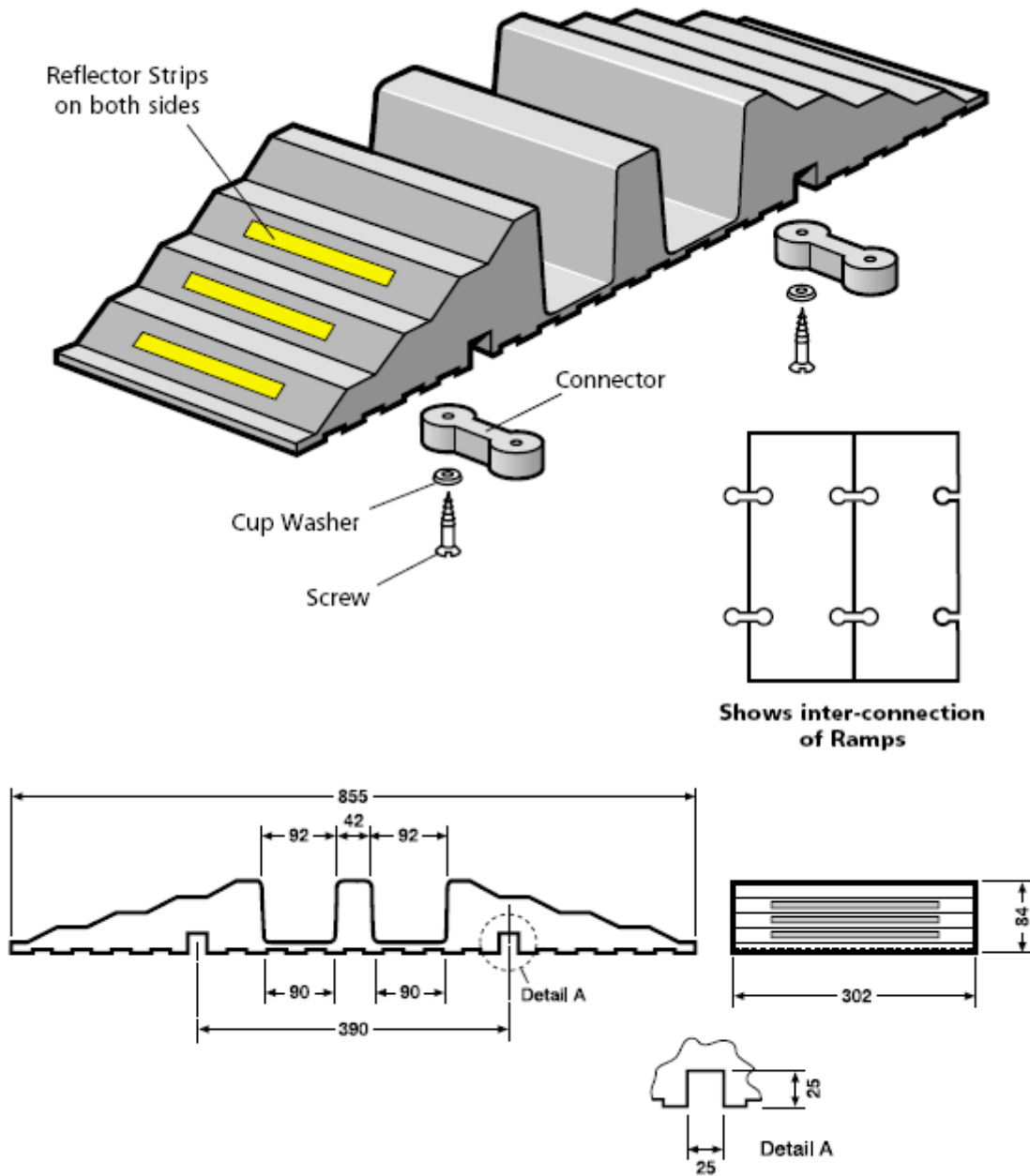
MATERIAL: NATURAL/SBR RUBBER COMPOUND

All Dimensions are in MILLIMETRES
Dimensions can vary they are TYPICAL ONLY

Revision C/PP0034 - Aug 2004



Part Number: **HR3**



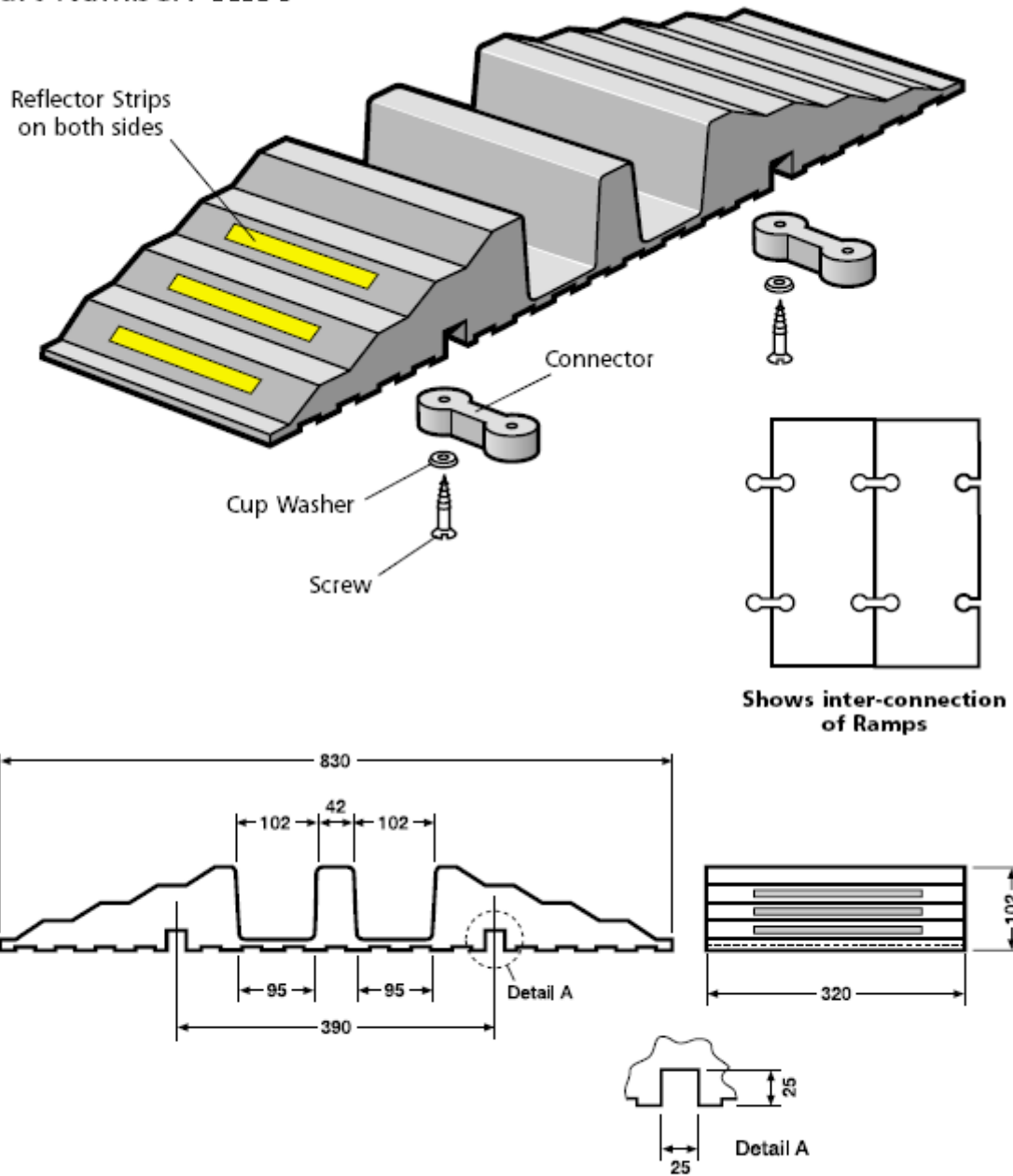
MATERIAL: NATURAL/SBR RUBBER COMPOUND

All Dimensions are in MILLIMETRES
Dimensions can vary they are TYPICAL ONLY

Revision C/PP0035 - Aug 2004



Part Number: **HR4**



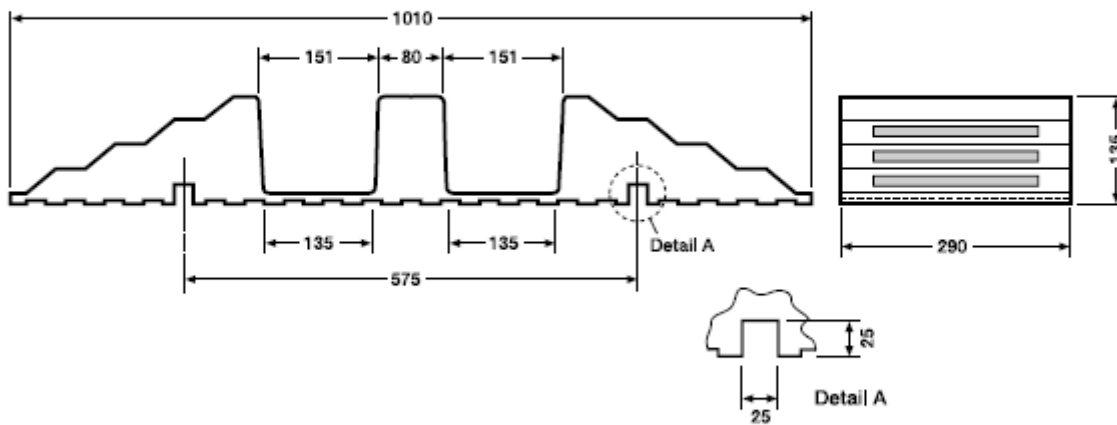
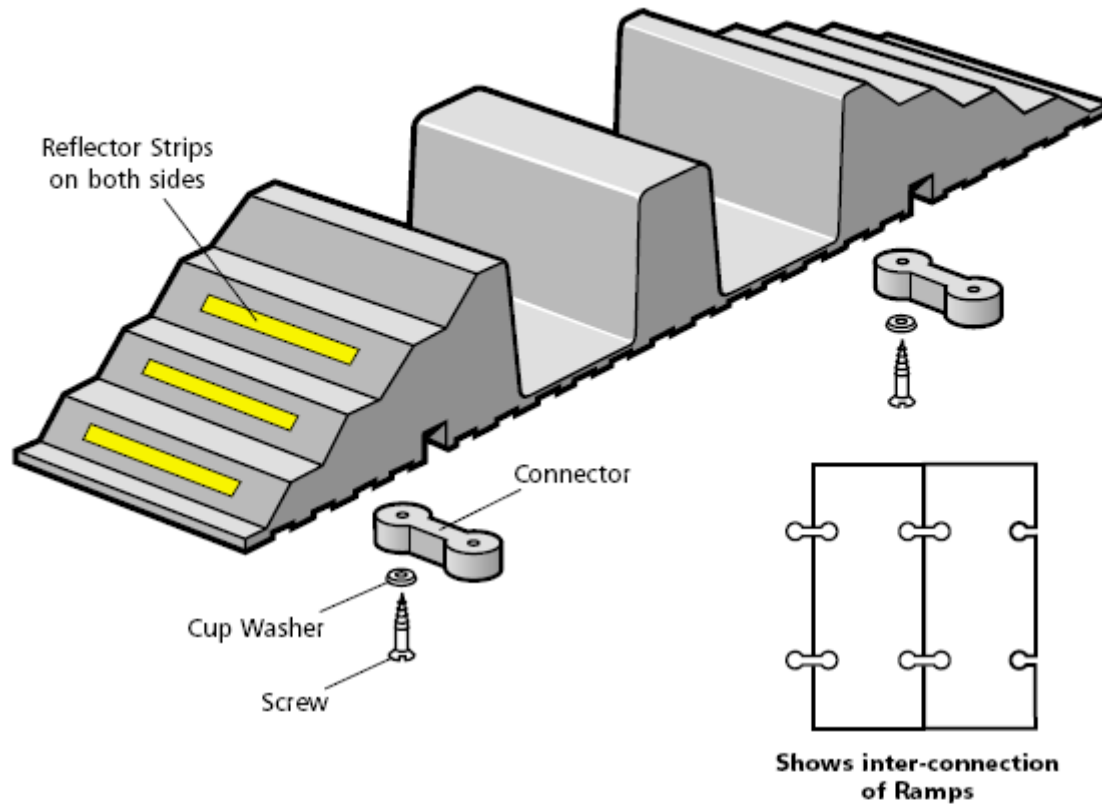
MATERIAL: NATURAL/SBR RUBBER COMPOUND

All Dimensions are in MILLIMETRES
Dimensions can vary they are TYPICAL ONLY

Revision C/PP0036 - Aug 2004



Part Number: **HR5**



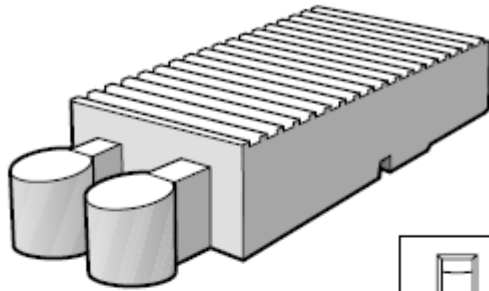
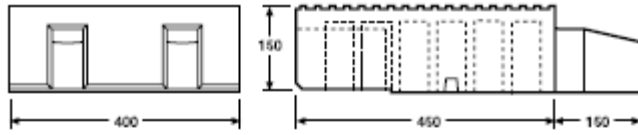
MATERIAL: NATURAL/SBR RUBBER COMPOUND

All Dimensions are in MILLIMETRES
Dimensions can vary they are TYPICAL ONLY

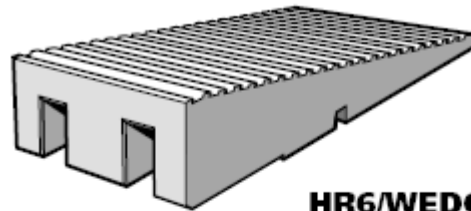
Revision C/PP0037 - Aug 2004



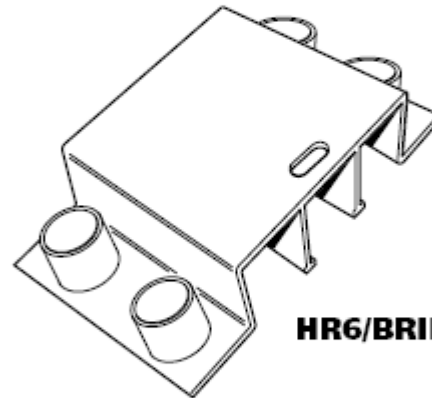
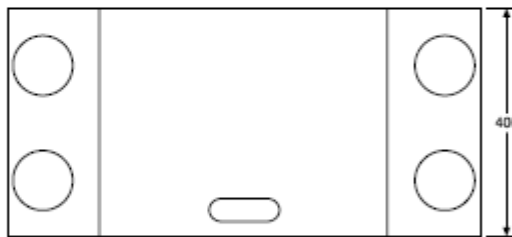
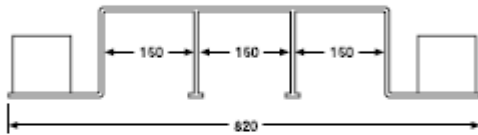
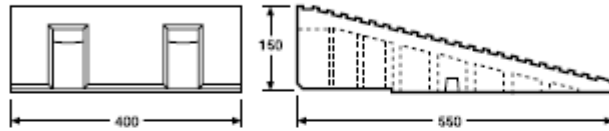
Part Number: **HR6**



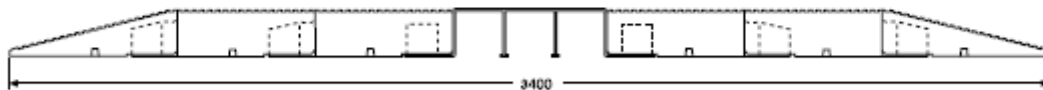
HR6/BLOCK



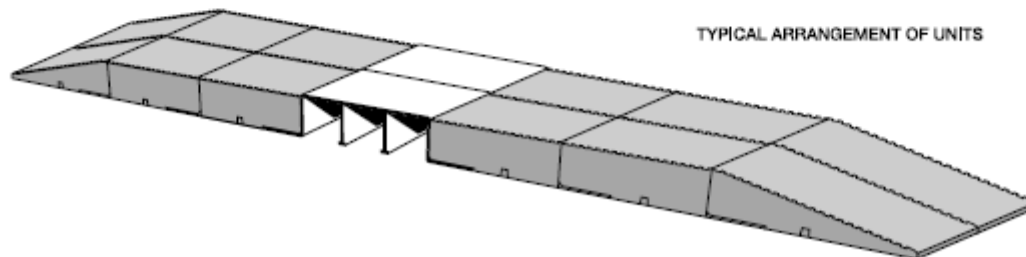
HR6/WEDGE



HR6/BRIDGE



TYPICAL ARRANGEMENT OF UNITS



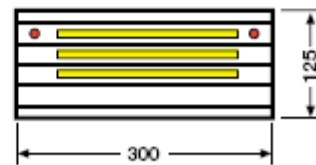
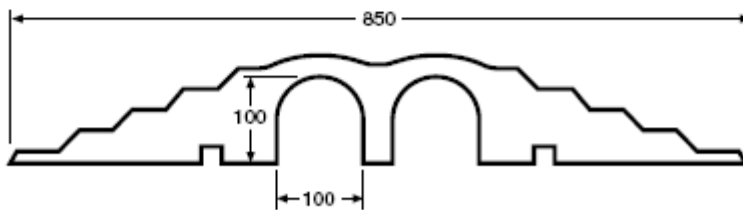
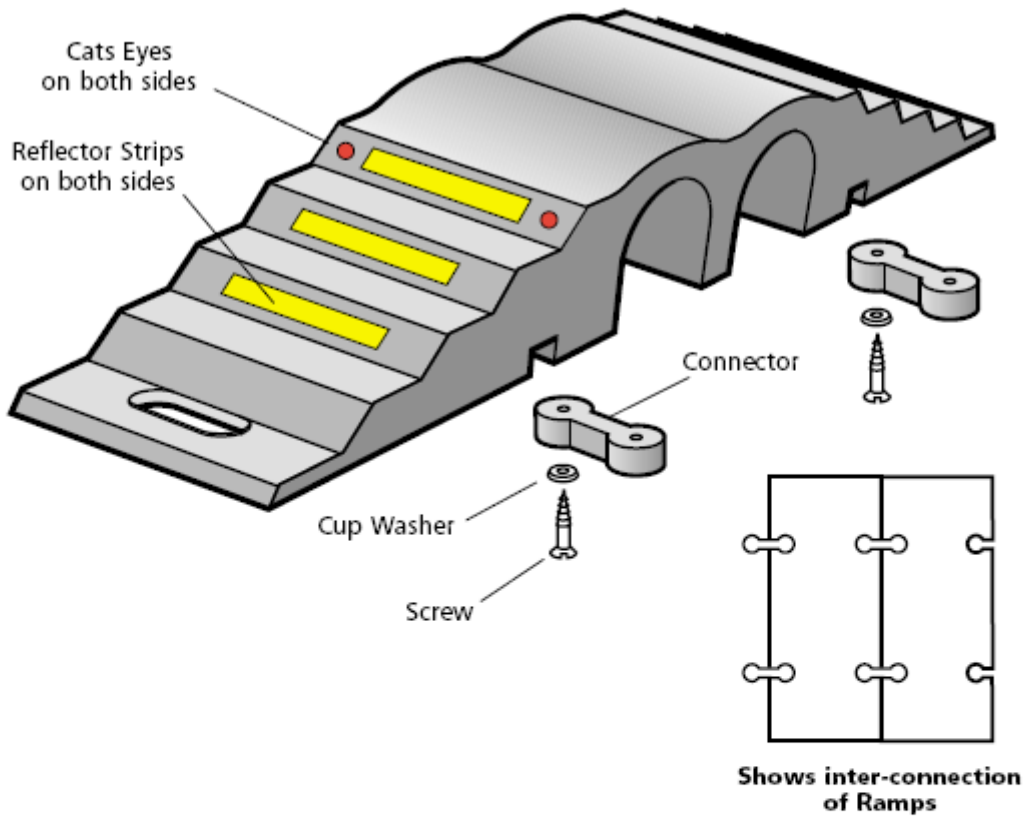
MATERIALS: GALVANISED STEEL & NATURAL/SBR RUBBER COMPOUND

All Dimensions are in MILLIMETRES
Dimensions can vary they are TYPICAL ONLY

Revision C/PP0038 - Aug 2004



Part Number: **HCR4**



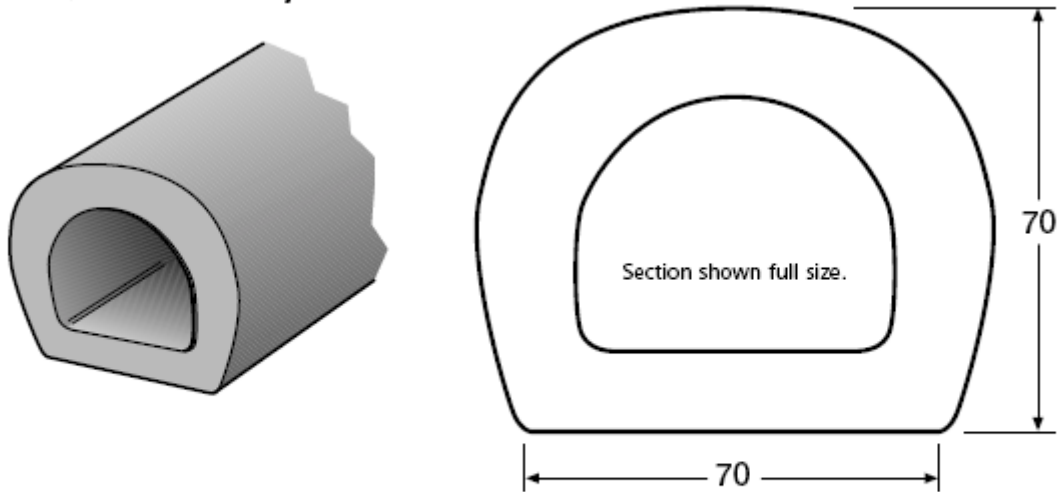
MATERIALS: NATURAL RUBBER/CAST ALUMINIUM CENTRE

All Dimensions are in MILLIMETRES
Dimensions can vary they are TYPICAL ONLY

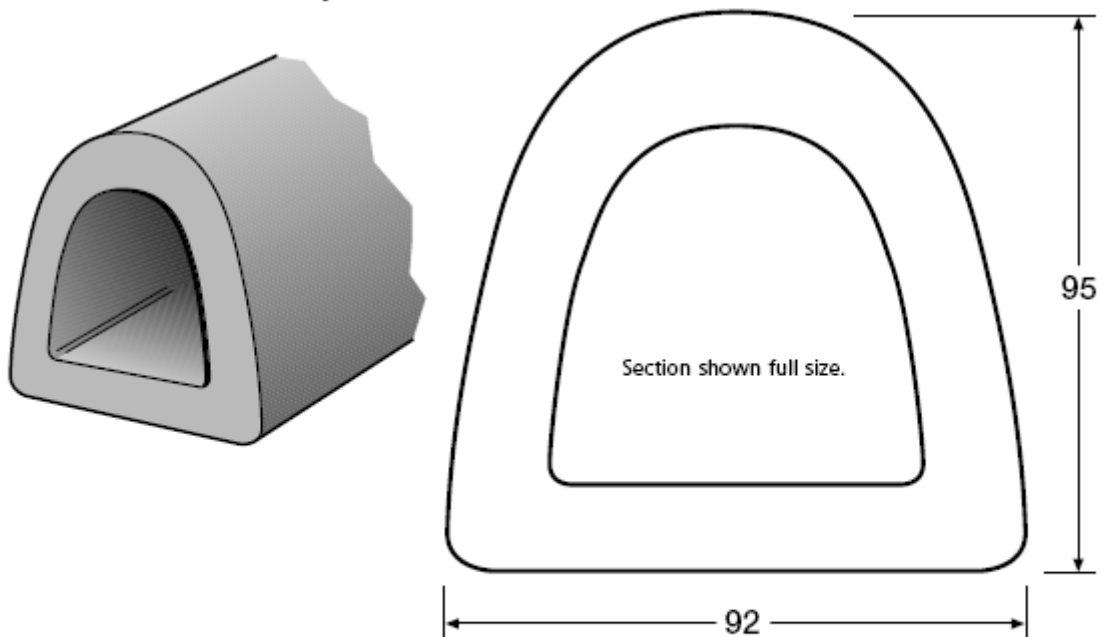
Revision C/PP0039 - Aug 2004



Part Number: **EXD/3x3 - 2.44m**



Part Number: **EXD/4x4 - 2.44m**



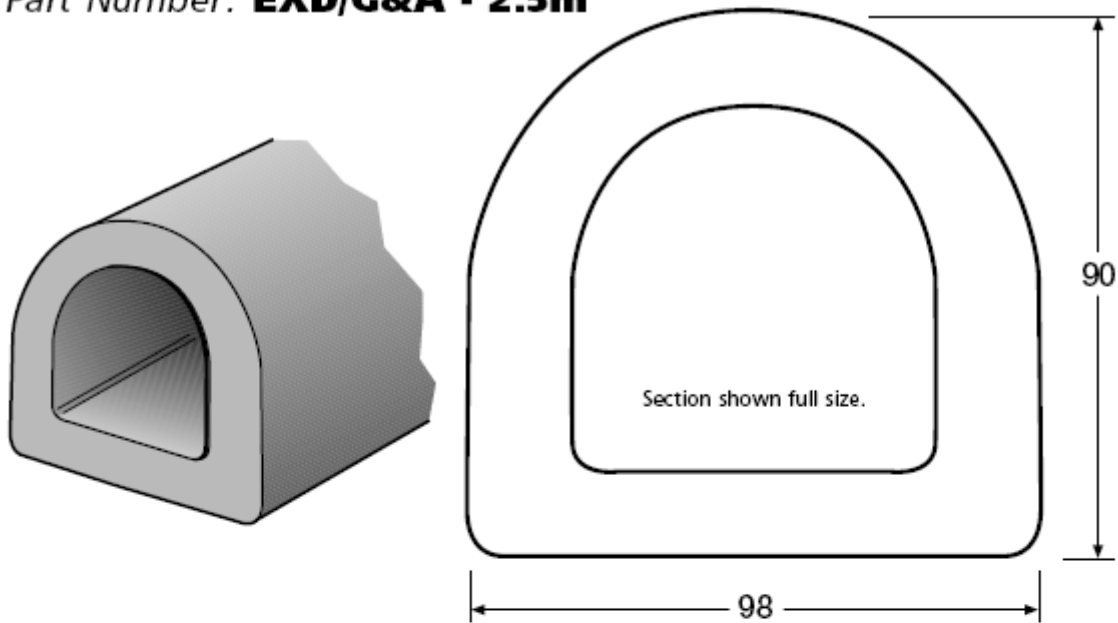
MATERIAL: NATURAL/SBR RUBBER COMPOUND

All Dimensions are in MILLIMETRES
Dimensions can vary they are TYPICAL ONLY

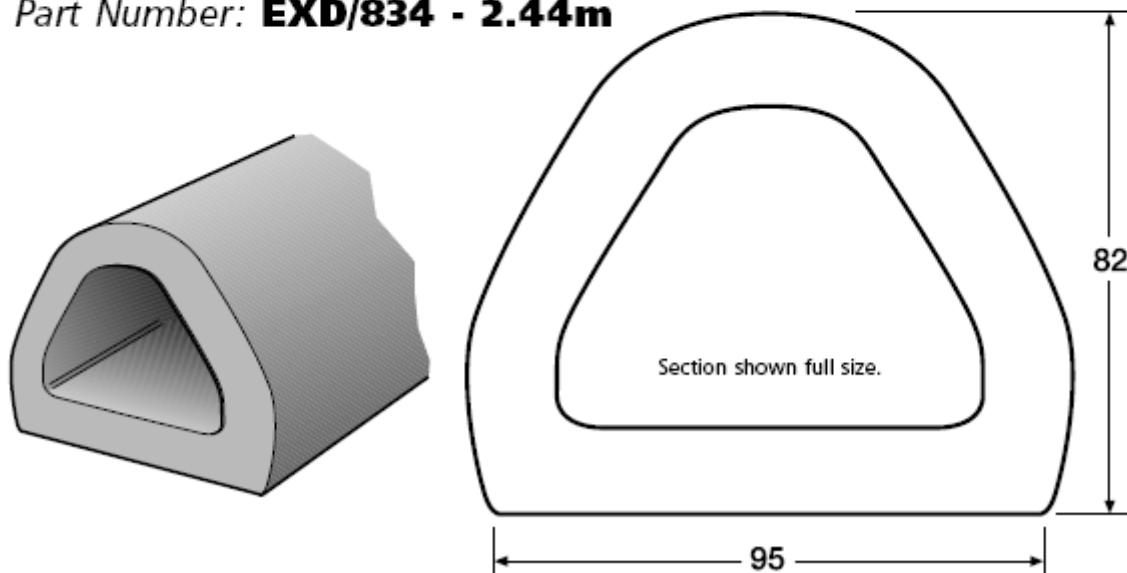
Revision C/PP0046 - Aug 2004



*Part Number: **EXD/G&A - 2.5m***



*Part Number: **EXD/834 - 2.44m***



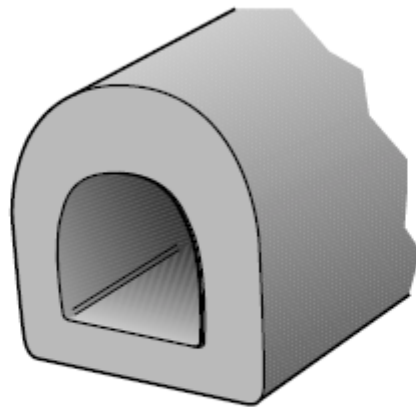
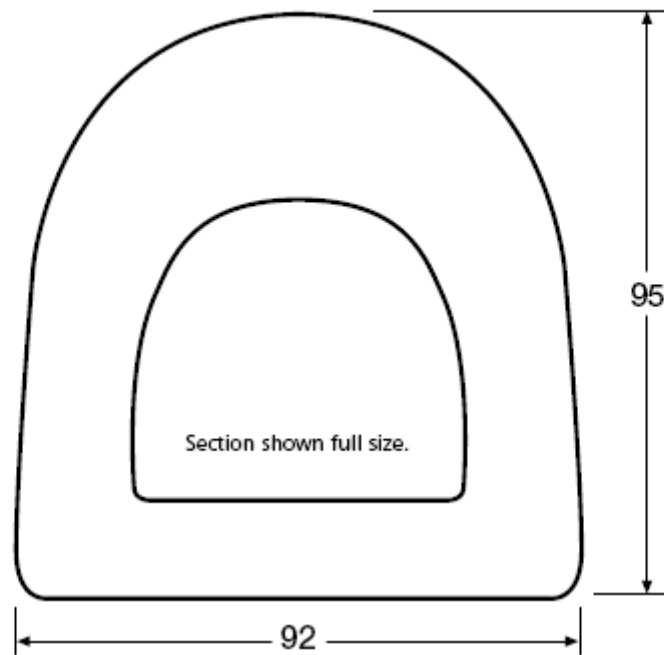
MATERIAL: NATURAL/SBR RUBBER COMPOUND

All Dimensions are in MILLIMETRES
Dimensions can vary they are TYPICAL ONLY

Revision C/PP0047 - Aug 2004



Part Number: **EXD/4x4/HD - 2.0m**



MATERIAL: NATURAL/SBR RUBBER COMPOUND

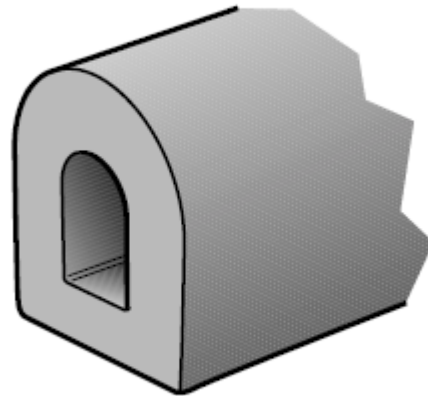
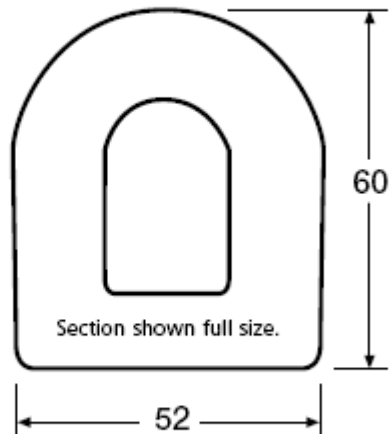
All Dimensions are in MILLIMETRES
Dimensions can vary they are TYPICAL ONLY

Revision C/PP0048 - Aug 2004



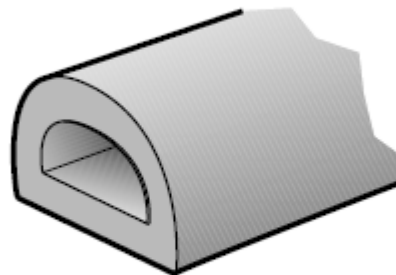
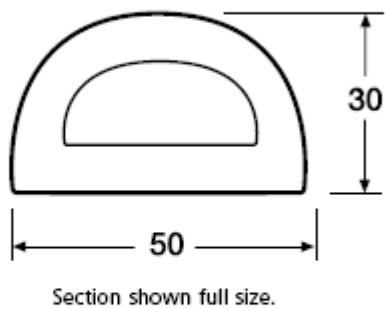
Part Number: **EXD/60 x 52**

Standard Length: 2.5 Metres Long



Part Number: **EXD/50 x 30**

Standard Length: 2.5 Metres Long



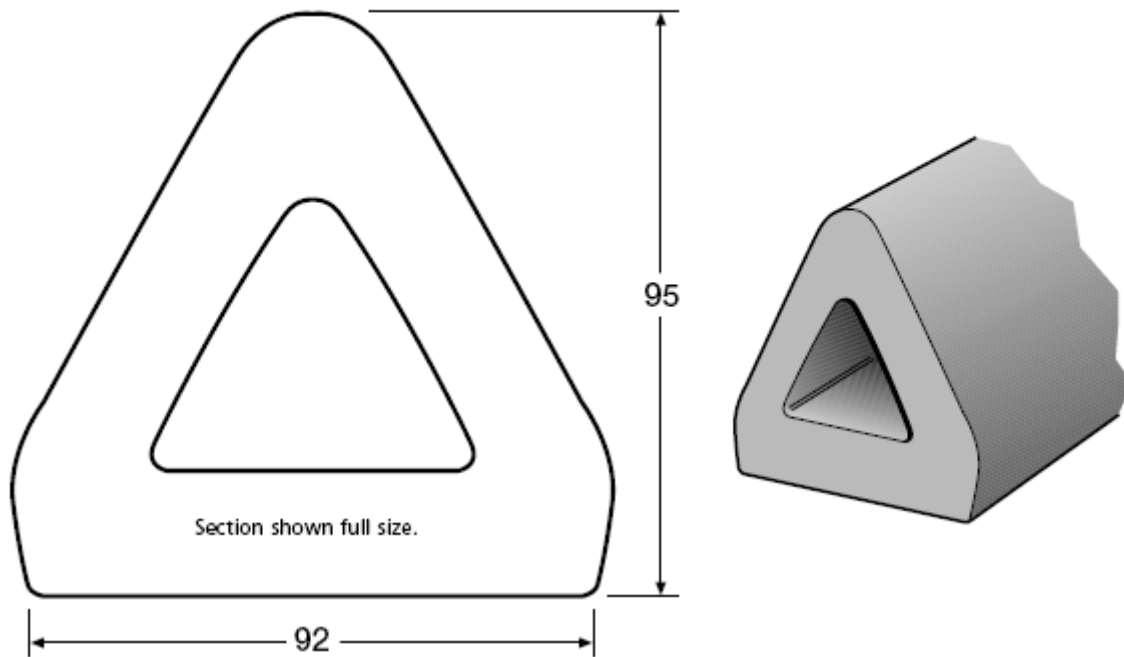
MATERIAL: NATURAL/SBR RUBBER COMPOUND

All Dimensions are in MILLIMETRES
Dimensions can vary they are TYPICAL ONLY

Revision C/PP0049 - Aug 2004



Part Number: **EXD/DELTA - 2.6m**



Part Number: **EXD/30 x 16**



MATERIAL: NATURAL/SBR RUBBER COMPOUND

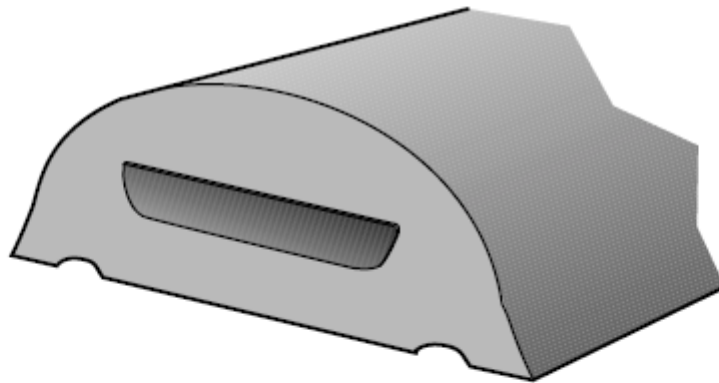
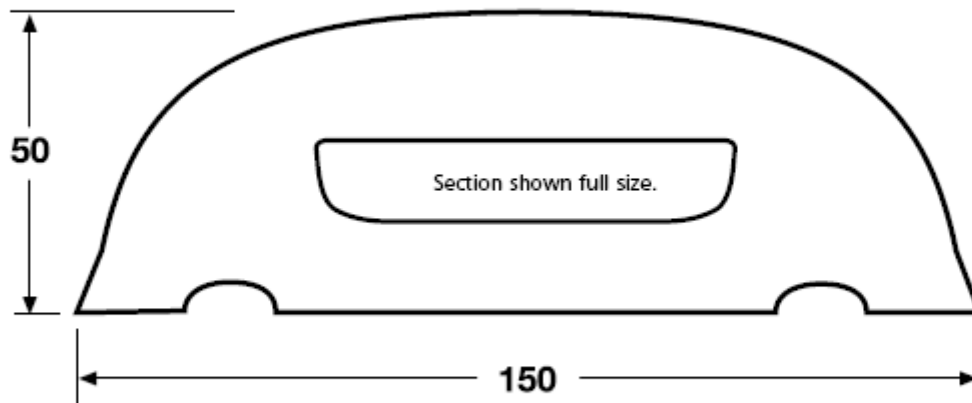
All Dimensions are in MILLIMETRES
Dimensions can vary they are TYPICAL ONLY

Revision C/PP0050 - Aug 2004



Part Number: **EXD/6 x 2**

Standard Length: 3 Metres



MATERIAL: NATURAL/SBR RUBBER COMPOUND

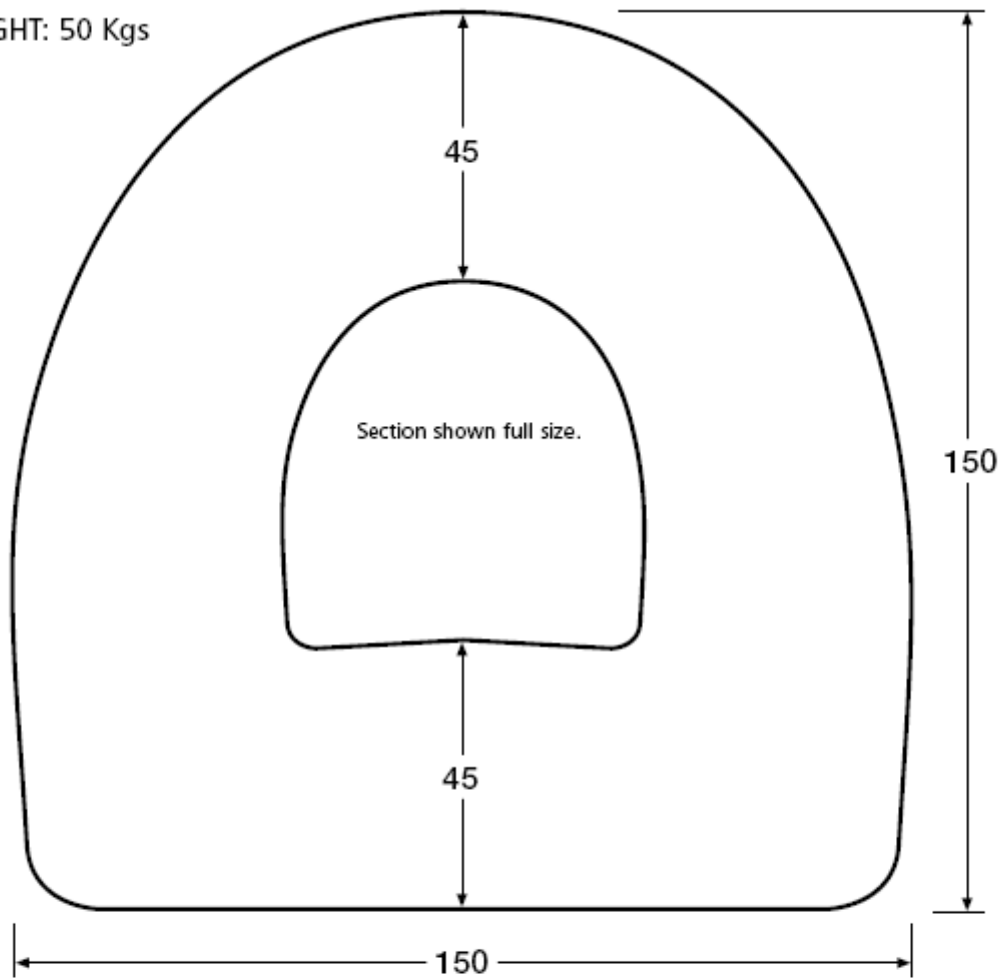
All Dimensions are in MILLIMETRES
Dimensions can vary they are TYPICAL ONLY

Revision C/PP0051 - Aug 2004

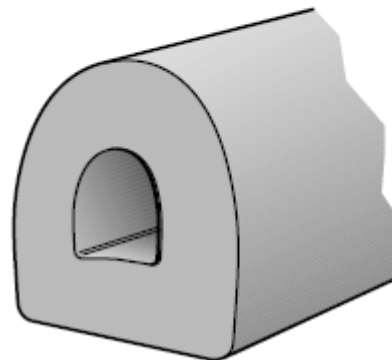


Part Number: **EXD/6 x 6**

WEIGHT: 50 Kgs



Standard Length: 2 Metres



MATERIAL: NATURAL/SBR RUBBER COMPOUND

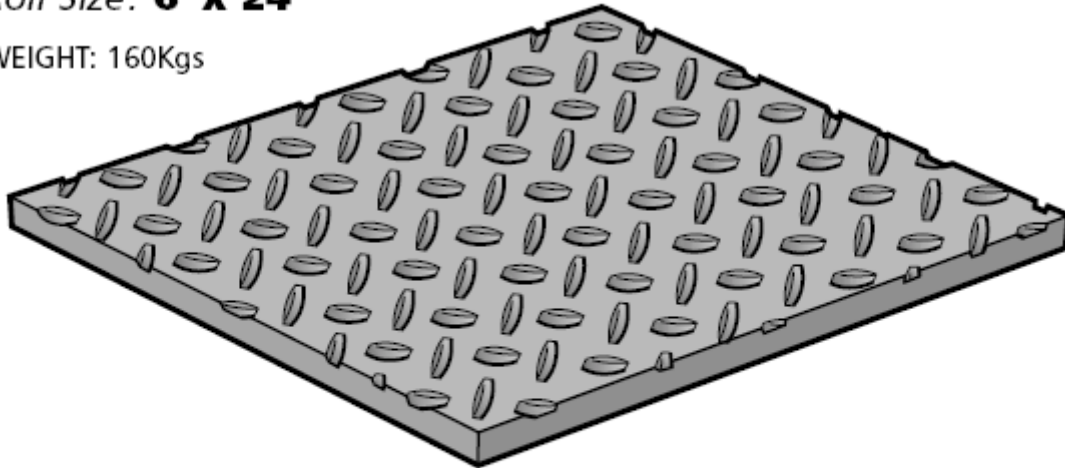
All Dimensions are in MILLIMETRES
Dimensions can vary they are TYPICAL ONLY

Revision C/PP0052 - Aug 2004

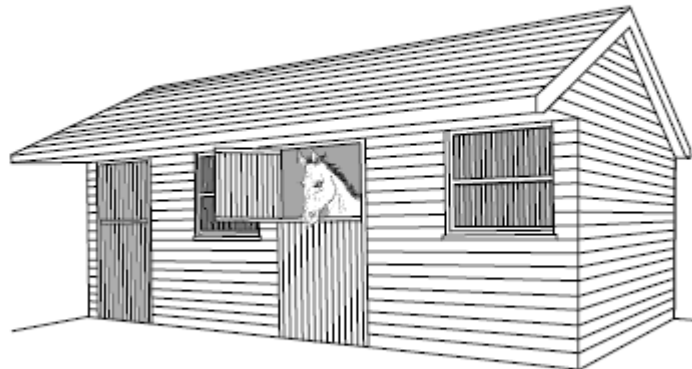
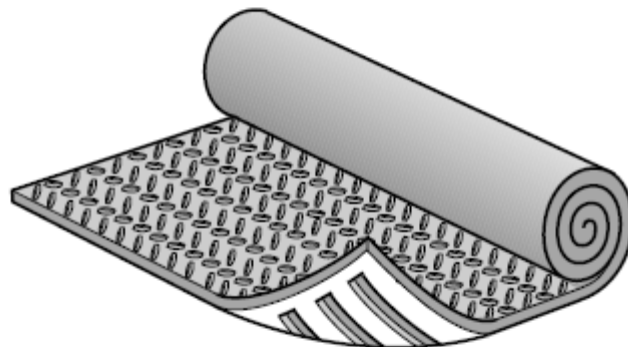
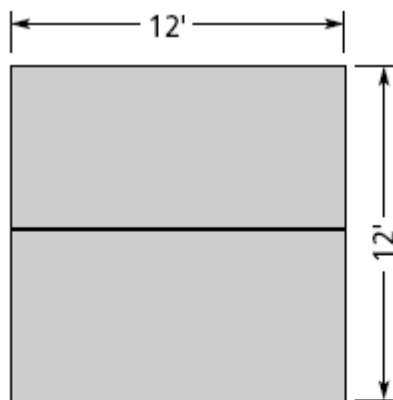


Roll Size: **6' x 24'**

WEIGHT: 160Kgs



Roll size is 6' x 24' so standard 12' x 12' loose box will only have one joint, which can be sealed with mastic.



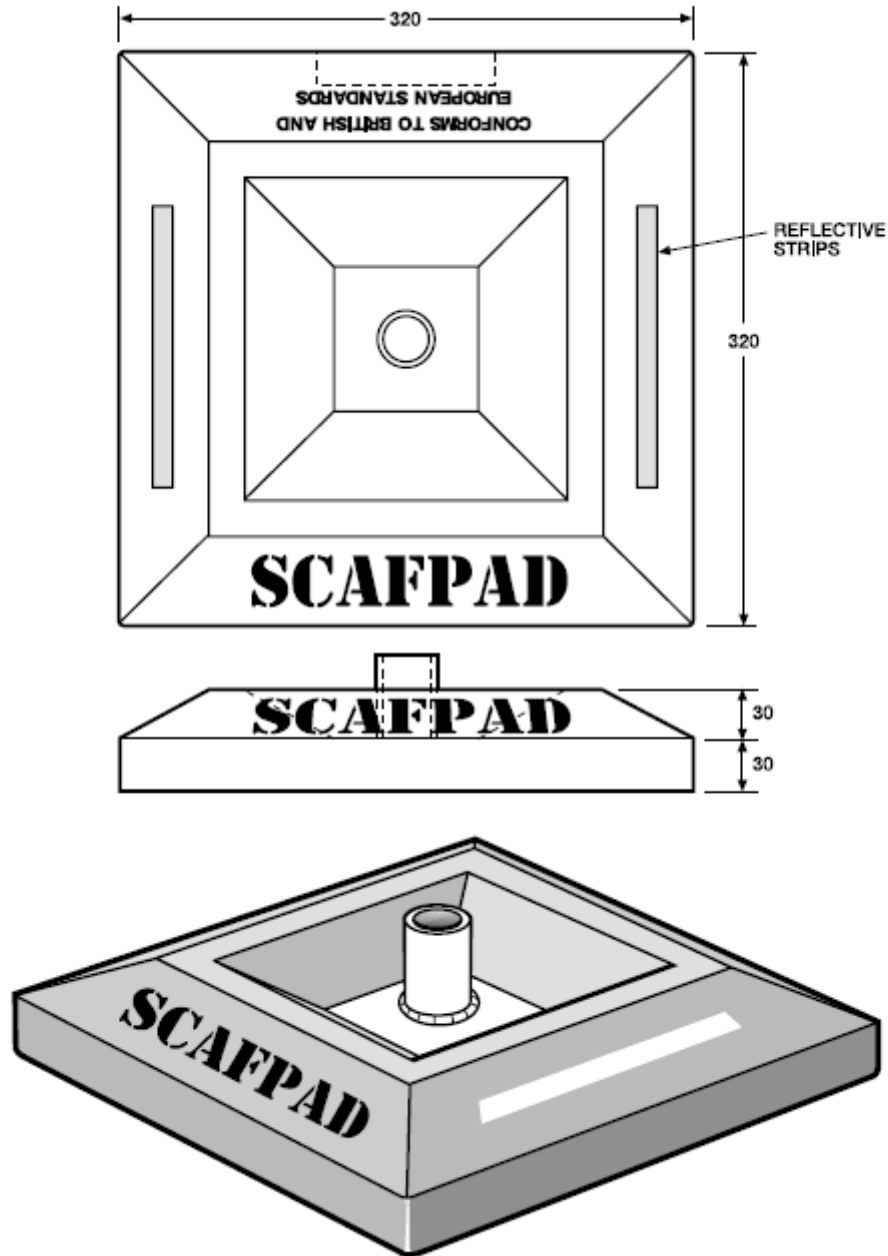
MATERIAL: HEAVY DUTY IMPERVIOUS FIBRE REINFORCED NATURAL/SBR RUBBER COMPOUND

All Dimensions are in FEET
Dimensions can vary they are TYPICAL ONLY

Revision C/PP0053 - Aug 2004



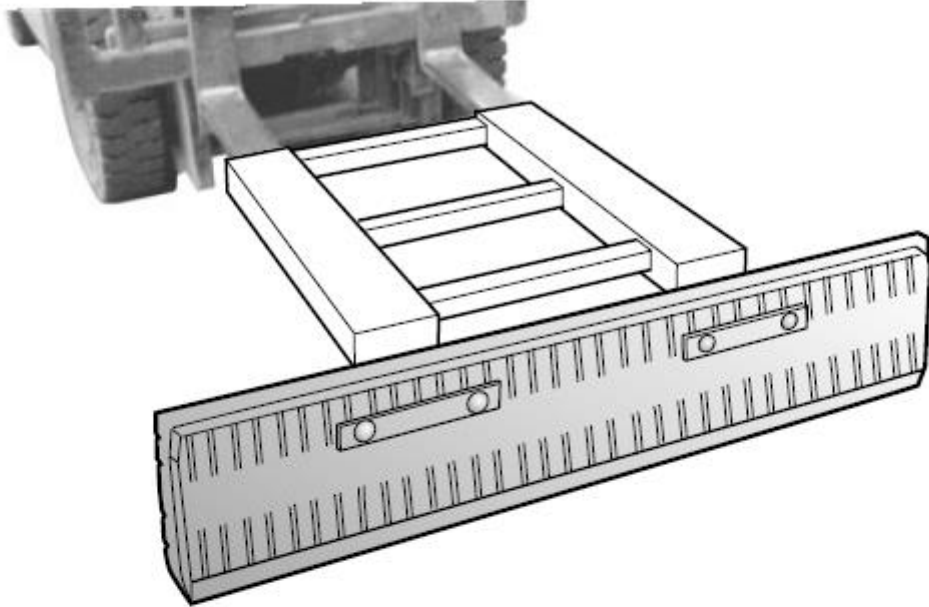
SCAFFOLDING SUPPORT FOOT

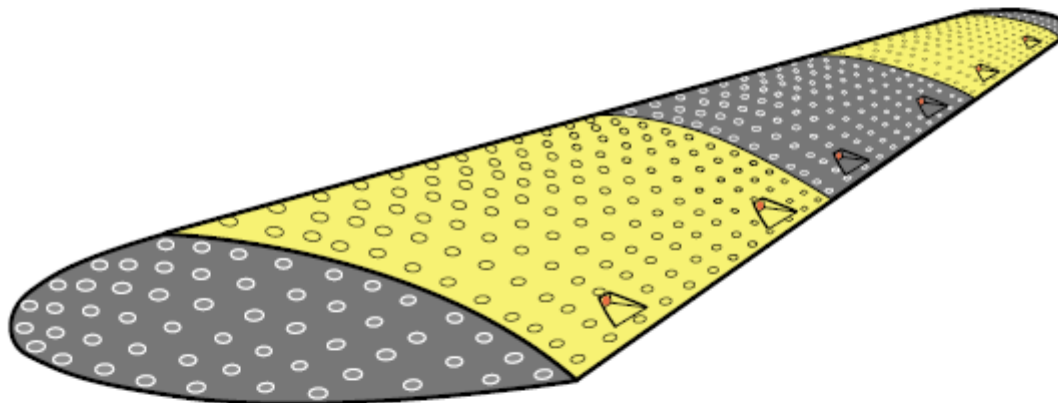
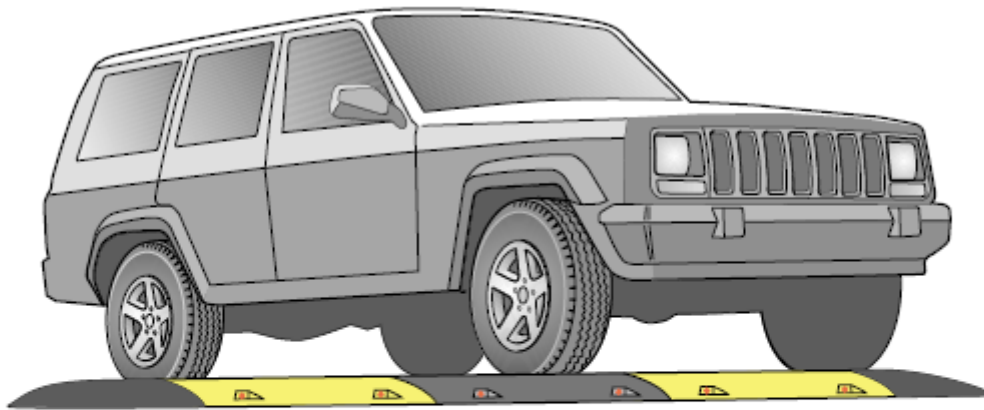


MATERIAL: NATURAL/SBR RUBBER COMPOUND

All Dimensions are in MILLIMETRES
Dimensions can vary they are TYPICAL ONLY

Revision C/PP0054 - Aug 2004





SPECIFICATION

- Manufactured from 100% SBR/Natural Rubber.
- Bolt down holes for permanent fixing.
- Easy to install using 12mm bolts.
- Surface pattern for extra grip.
- 500mm sections in alternative black and yellow.
- Integral reflector in red.
- End sections available.

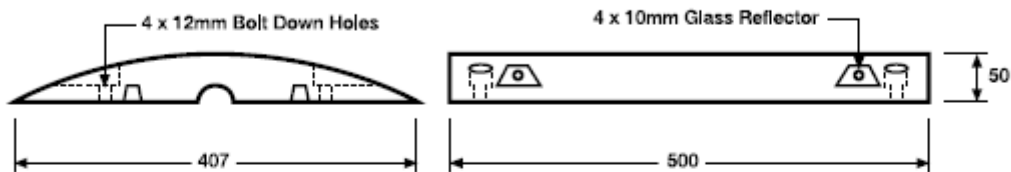
All Dimensions are in MILLIMETRES
Dimensions can vary they are TYPICAL ONLY

Revision C/PP0056 - Aug 2004



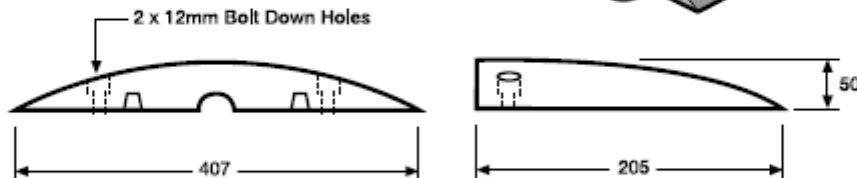
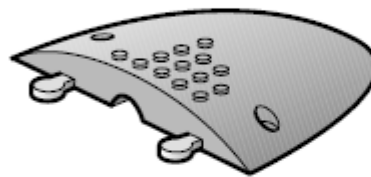
Part Number: **SP50B** (Black) 7.4kgs
SP50Y (Yellow) 8.5kgs

50mm High Ramp
Recommended for Speeds up to 15mph

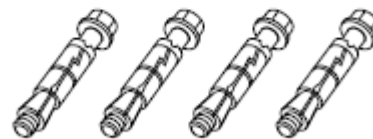


Part Number: **SP50.END**

50mm End Cap - Weight 1.9kgs



- Manufactured from 100% SBR/Natural Rubber.
- Bolt down holes for permanent fixing.
- Easy to install using 12mm bolts.
- Surface pattern for extra grip.
- 500mm sections in alternative black and yellow.
- Integral reflector in red.
- End sections available.



12mm Bolts for fixing
to carriageway

MATERIAL: NATURAL/SBR RUBBER COMPOUND

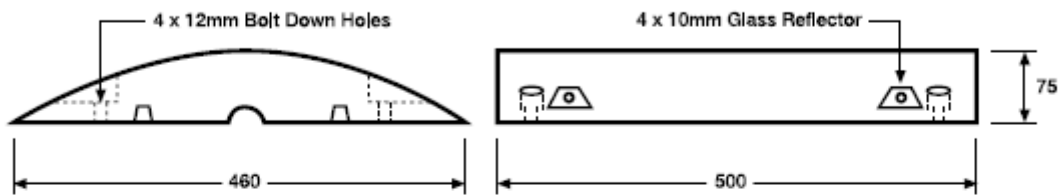
All Dimensions are in MILLIMETRES
Dimensions can vary they are TYPICAL ONLY

Revision C/PP0057 - Aug 2004



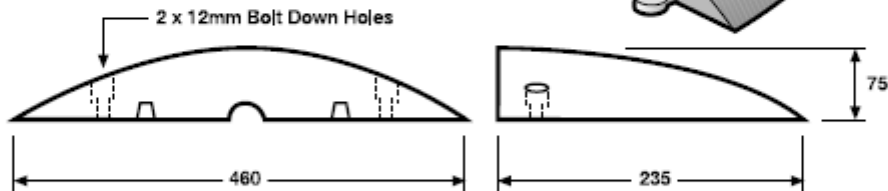
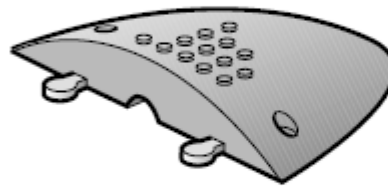
Part Number: **SP75B** (Black) 15kgs
SP75Y (Yellow) 16.5kgs

75mm High Ramp
Recommended for Speeds up to 10mph



Part Number: **SP75.END**

75mm End Cap - Weight 4kgs



- Manufactured from 100% SBR/Natural Rubber.
- Bolt down holes for permanent fixing.
- Easy to install using 12mm bolts.
- Surface pattern for extra grip.
- 500mm sections in alternative black and yellow.
- Integral reflector in red.
- End sections available.

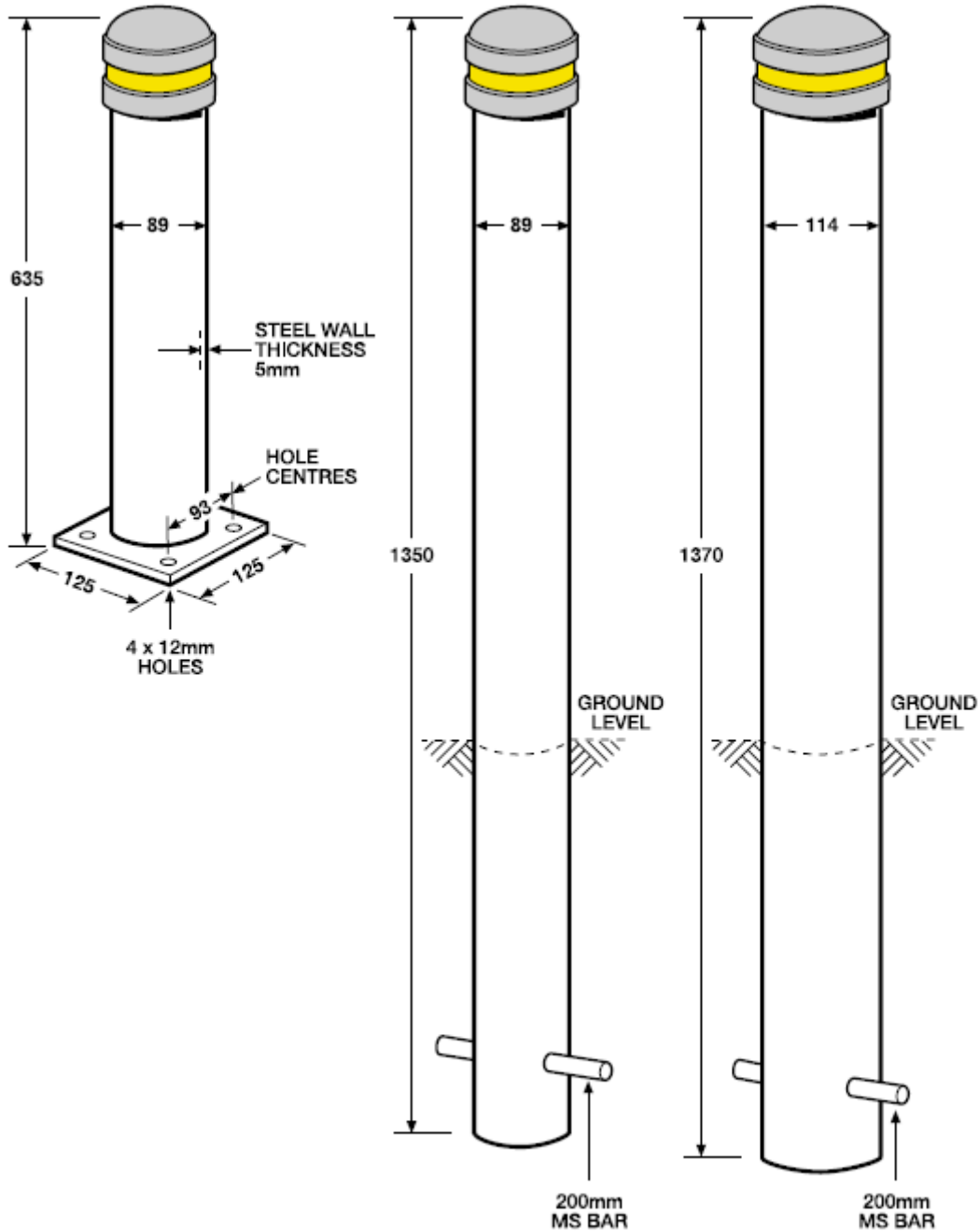


12mm Bolts for fixing
to carriage

MATERIAL: NATURAL/SBR RUBBER COMPOUND

All Dimensions are in MILLIMETRES
Dimensions can vary they are TYPICAL ONLY

Revision C/PP0058 - Aug 2004



MATERIALS: HOT DIP GALVANISED MILD STEEL WITH RUBBER CAP

All Dimensions are in MILLIMETRES
Dimensions can vary they are TYPICAL ONLY

Revision C/PP0059 - Aug 2004